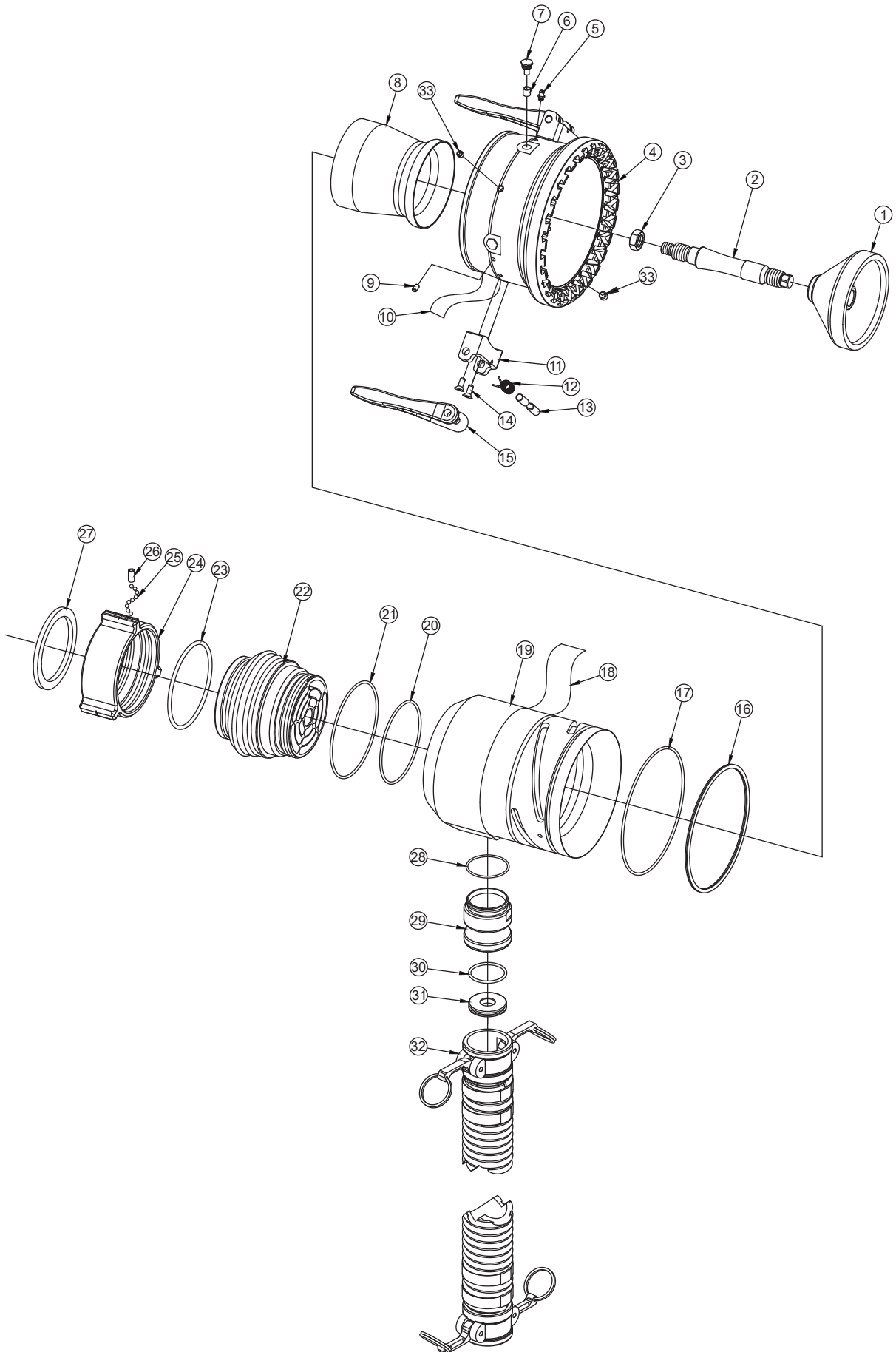


MASTERFOAM 1500 & 2000 GPM



#	DESCRIPTION	QTY	PART #
1	NOZZLE BAFFLE 1500	1	Z825
	NOZZLE BAFFLE 2000		Z826
2	NOZZLE SHAFT	1	Z827
3	5/8-18 JAM NUT	1	VT62-18NT
4	FOAM NOZZLE SHAPER	1	Z828
5	GREASE FITTING 1/4-28	1	VT25-28ZERK
6	NYLON BUSHING	4	AY307
7	CAM SCREW	4	FF126
8	NOZZLE BARREL CONE 1500	1	Z823
	NOZZLE BARREL CONE 2000	1	Z824
9	1/4-28 X 3/8 SOCKET SET SCREW	2	VT25-28SS375
10	BARREL LABEL: MASTER FOAM	1	Z830
11	HINGE BLOCK	2	Z821
12	HANDLE TORSION SPRING	2	A4263
13	PIVOT PIN	2	A4262
14	1/4-28 X 5/8 FLAT HEAD SCREW	4	VT25-28FH625
15	FOLDING HANDLE	2	A4261
16	QUAD-RING-363	1	VOQ-4363
17	WEAR STRIP	1	Z832
18	NAME LABEL: MASTER FOAM	1	Z831
19	FOAM NOZZLE OUTER BODY	1	Z829
	ER OUTER BODY	1	Z819
20	O-RING-244	1	VO-244
21	O-RING 250	1	VO-250
22	NOZZLE BASE	1	Z822
23	O-RING 348	1	VO-348
24	COUPLING 3.5" NH ROCKERLUG	1	MS687*
25	1/4" SS BALL	54	V2125
26	5/16-24 X 5/8 SOCKET SET SCREW	1	VT31-24SS625
27	3.5" GASKET	1	V3196
28	O-RING-137	1	VO-137
29	2" CAMLOCK CONNECTOR	1	Z820
30	O-RING-224	2	VO-224
31	ORIFICE PLATE 1% @1500 GPM	1	Z833-1500-1
	ORIFICE PLATE 1% @2000GPM		Z833-2000-1
	ORIFICE PLATE 3% @1500 GPM		Z833-1500-3
	ORIFICE PLATE 3% @2000 GPM		Z833-2000-3
32	10' HOSE WITH 2 CAMLOCKS 2.0"CAMLOCK X 2.0"HOSE DIA	1	Z628-R
33	5/16-18 X 3/8 SOCKET SET SCREW CUP POINT	1	VT31-18SS375
-	2" MASTER FOAM DUST CAP (NOT PICTURED)	1	Z627-R

\*\* - CONSULT FACTORY FOR SPECIAL THREADS