

LXH-001

PARTS LIST: HEMISPHERE MONITOR
 MAINTENANCE AND SERVICE

SHEET:
 1 of 6

REV:

DATE: 8/18/20



TASK FORCE TIPS, LLC.
 3701 INNOVATION WAY
 VALPARAISO, IN 46383 USA
 (219)462-6161

ITEM NO.	PART NUMBER	DESCRIPTION	
1	HE100	BODY	1
2	VO-239	O-RING 239	1
3	VO-151	O-RING 151	1
4	VO-109	O-RING 109	1
5	VO-124	O-RING 124	1
6	VO-117	O-RING 117	1
7	VO-028	O-RING 028	1
8	VO-146	O-RING 146	1
9	VT25-28SS250	1/4-28 X 1/4 SOCKET SET SCREW CUP POINT	1
10	VT25-20SS625	1/4-20 X 5/8 SOCKET SET SCREW CUP POINT	1
11	VT37-24SS312	3/8-24 X 5/16 SOCKET SET SCREW CUP POINT	2
12	VB.312TO	5/16" TORLON BALL	38
13	VB.312	5/16" STAINLESS BALL	38
14	V2120	3/16" STAINLESS BALL	96
15	HE106	PIN RETRACT SHAFT	1
16	HE104	AXIAL LOCK PIN	1
17	HE150	WAVE SPRING	1
18	HE105	PLUG	1
19	HE103	ROTATIONAL LOCK PIN	1
20	VR4220	SNAP RING	2
21	HE107	PIN RETRACT LEVER	2
22	A1623	CRANK WITH KNOB SUBASSEMBLY	2
23	HE119	SHAFT SPACER	1
24	Y3162	BUSHING	1
25	HE124	DRIVE SHAFT	1
26	X220	12 DP WORM	1
27	X225	KEY; 1/8" X 1.00"	1
28	Y4150		1
29	VM4250	BEARING	1
30	VT25-20BH500	1/4-20 X 1/2 BUTTON HEAD CAP SCREW	4
31	HE802	PULL PIN SUBASSEMBLY	1
32	HE121	CAM LOCK PAD	3
33	HE800	ARTICULATING ELBOW/BASE	1
34	HE125	CLAMP LEVER	1
35	HE190	LOCK/UNLOCK LABEL	1
36	HE120	CAM LOCK KNOB	1
37	HE112	DOUBLE BALL SWIVEL CAM	1
38	HE116	DOUBLE BALL SWIVEL CAM FOLLOWER	1
39	HE113	BALL SWIVEL MIDDLE SEGMENT 2.5"	1
40	XX320	SWIVEL TRUNNION	4
41	XX364	WASHER	1
42	VW740X550-16	WAVE SPRING WASHER	4
43	VO-236	O-RING 236	2
44	VT31-18BH625	5/16-24 X 5/8 BUTTON HEAD CAP SCREW	4
45	HE123	KNOB BALL RACE	1
46	VT37-16BH2.0	3/8-16 X 2.0 BUTTON HEAD CAP SCREW	1
47	VW812X406-65	WASHER	1
48	HE129	PIVOT COLLAR	1
49	HE114*	BALL SWIVEL OUTLET SEG. 2.5"M	1
50	XXL406	STREAM STRAIGHTENER INSERT	1
51	V2120-TORLON	3/16" BALL - TORLON	12
52	HE814	GATED ELBOW 45 DEG SUBASSY	1
53	HE815	GATED ELBOW 45 DEG W/ GAUGE SUBASSY	1
55	M307*	COUPLING 2.5"F	1
56	V3190	GASKET - 2.5" HOSE COUPLING	1
57	VT25-28SS500	1/4-28 X 1/2 SOCKET SET SCREW CUP POINT	2
58	HE194	INSTRUCTION LABEL	1
59	HE192	NAME LABEL: HEMISPHERE PORTABLE MONITOR	1

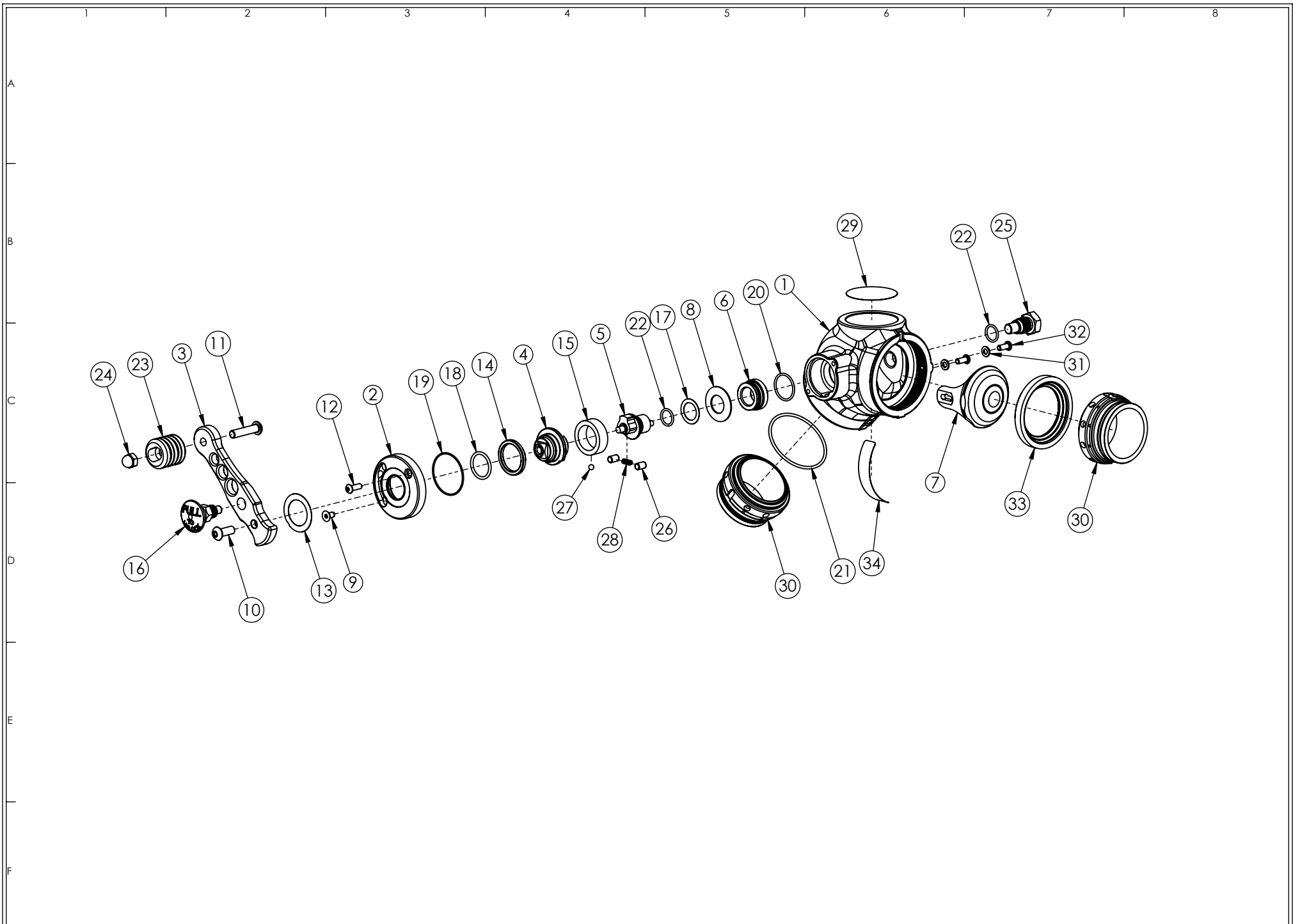
LXH-001

PARTS LIST: HEMISPHERE MONITOR
 MAINTENANCE AND SERVICE

SHEET: 2 of 6
 REV:
 DATE: 8/18/20



TASK FORCE TIPS, LLC.
 3701 INNOVATION WAY
 VALPARAISO, IN 46383 USA
 (219)462-6161



LXH-001

PARTS LIST: HEMISPHERE MONITOR
 MAINTENANCE AND SERVICE

SHEET:
 3 of 6

REV:

DATE: 8/18/20



TASK FORCE TIPS, LLC.
 3701 INNOVATION WAY
 VALPARAISO, IN 46383 USA
 (219)462-6161

ITEM NO.	PART NUMBER	DESCRIPTION	QTY.
1	AY312R-BLU	2.5" GATE ELBOW 45 DEG RIGHT BODY	1
2	HE110	TRUNNION RETAINER	1
3	HE117	HANDLE	1
4	HE109	OUTER UPPER TRUNNION	1
5	AY350	INNER UPPER TRUNNION	1
6	AY351	INNER BUSHING	1
7	AY310	HALF BALL	1
8	AY325	BELLEVILLE SPRING	1
9	VT25-20FH500	1/4-20 X 1/2 FLAT HEAD CAP SCREW	1
10	VT37-16BH1.0	3/8-16 X 1 BUTTON HEAD CAP SCREW	1
11	VT37-16BH1.7	3/8-16 X 1-3/4 BUTTON HEAD CAP SCREW	1
12	VT25-20BH750	1/4-20 X 3/4 BUTTON HEAD CAP SCREW	1
13	HE191	OPEN/CLOSE LABEL	1
14	AY324	BUSHING	1
15	AY352	FLOATING RING	1
16	HE805	PULL PIN SUBASSEMBLY	1
17	G636-020	WASHER	1
18	VO-216	O-RING 216	1
19	VO-033	O-RING 033	1
20	VO-123	O-RING 123	1
21	VO-234	O-RING 234	1
22	VO-115	O-RING 115	2
23	XXL625	SINGLE HANDLE TOP	1
24	VT37-16AC	3/8-16 ACORN NUT	1
25	AY353	LOWER TRUNNION	1
26	VP312X.50	DOWEL PIN .3127 DIA X .50 LONG	2
27	V2125	1/4" STAINLESS STEEL BALL	1
28	HC115	CONTACT SPRING	1
29	AY316	LABEL: TFT LOGO	1
30	AY365	ADAPTER HSBGM30	2
31	VW500X265-63	WASHER	2
32	VT25-20BH625	1/4-20 X 5/8 BUTTON HEAD CAP SCREW	2
33	AY315	VALVE SEAT 2.5" I.D.	1
34	HE193	WARNING LABEL	1

LXH-001

PARTS LIST: HEMISPHERE MONITOR
 MAINTENANCE AND SERVICE

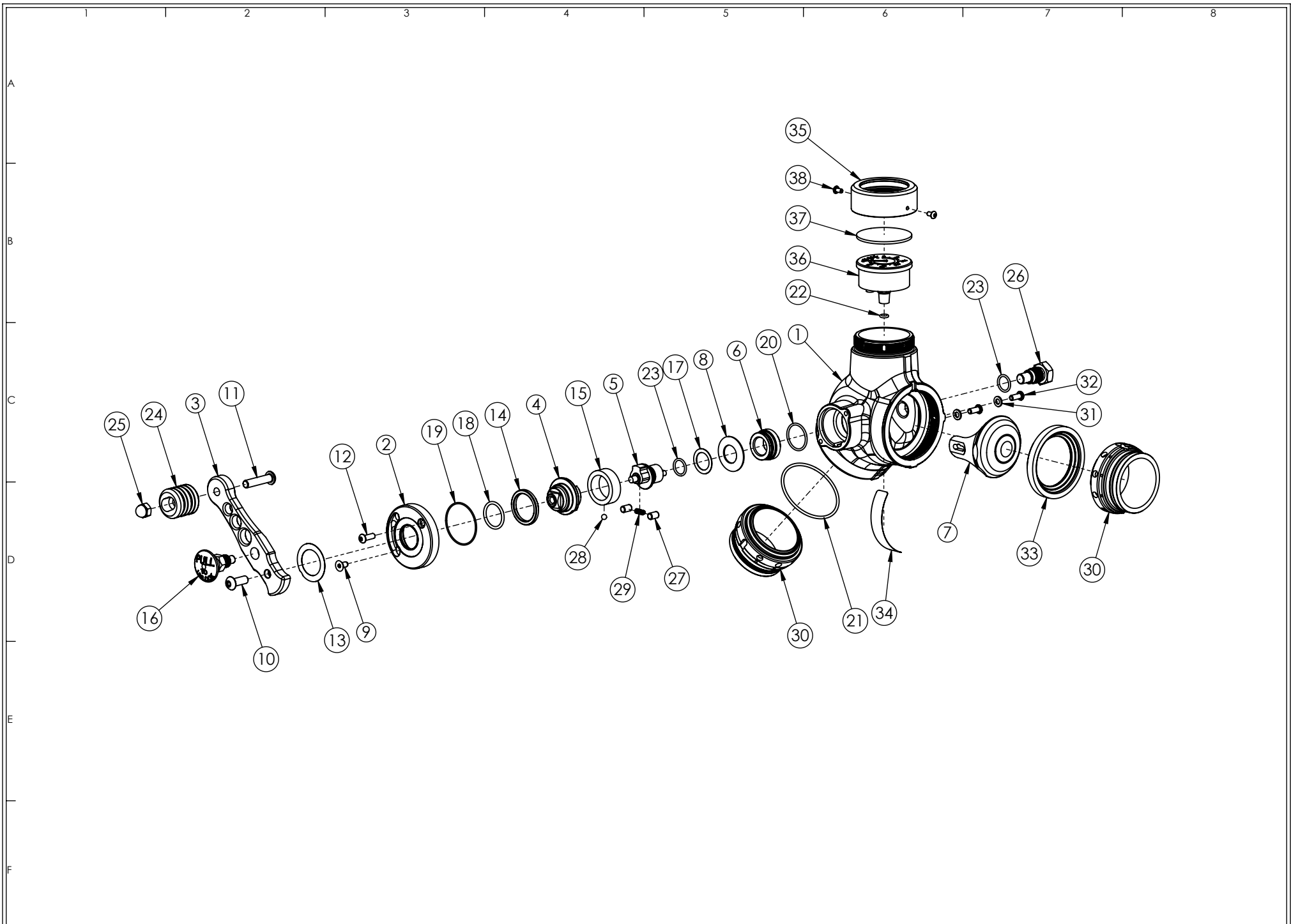
SHEET:
4 of 6

REV:

DATE: 8/18/20



TASK FORCE TFS, LLC.
 3701 INNOVATION WAY
 VALPARAISO, IN 46383 USA
 (219)462-6161



LXH-001

PARTS LIST: HEMISPHERE MONITOR
 MAINTENANCE AND SERVICE

SHEET:
 5 of 6

REV:

DATE: 8/18/20



TASK FORCE TIPS, LLC.
 3701 INNOVATION WAY
 VALPARAISO, IN 46383 USA
 (219)462-6161

A
B
C
D
E
F
G
H

ITEM NO.	PART NUMBER	DESCRIPTION	QTY.
1	AY312RG	2.5" GATED ELBOW 45 DEG RIGHT BODY	1
2	HE110	TRUNNION RETAINER	1
3	HE117	HANDLE	1
4	HE109	OUTER UPPER TRUNNION	1
5	AY350	INNER UPPER TRUNNION	1
6	AY351	INNER BUSHING	1
7	AY310	HALF BALL	1
8	AY325	BELLEVILLE SPRING	1
9	VT25-20FH500	1/4-20 X 1/2 FLAT HEAD CAP SCREW	1
10	VT37-16BH1.0	3/8-16 X 1 BUTTON HEAD CAP SCREW	1
11	VT37-16BH1.7	3/8-16 X 1-3/4 BUTTON HEAD CAP SCREW	1
12	VT25-20BH750	1/4-20 X 3/4 BUTTON HEAD CAP SCREW	1
13	HE191	OPEN/CLOSE LABEL	1
14	AY324	BUSHING	1
15	AY352	FLOATING RING	1
16	HE805	PULL PIN SUBASSEMBLY	1
17	G636-020	WASHER	1
18	VO-216	O-RING 216	1
19	VO-033	O-RING 033	1
20	VO-123	O-RING 123	1
21	VO-234	O-RING 234	1
22	VO-108	O-RING 108	1
23	VO-115	O-RING 115	2
24	XXL625	SINGLE HANDLE TOP	1
25	VT37-16AC	3/8-16 ACORN NUT	1
26	AY353	LOWER TRUNNION	1
27	VP312X.50	DOWEL PIN .3127 DIA X .50 LONG	2
28	V2125	1/4" STAINLESS STEEL BALL	1
29	HC115	CONTACT SPRING	1
30	AY365	ADAPTER HSBGM30	2
31	VW500X265-63	WASHER	2
32	VT25-20BH625	1/4-20 X 5/8 BUTTON HEAD CAP SCREW	2
33	AY315	VALVE SEAT 2.5" I.D.	1
34	HE193	WARNING LABEL	1
35	J260	IN-LINE GAUGE COVER	1
36	J266	PRESSURE GAGE: 300PSI/14 BAR	1
37	J262	GAUGE LENS	1
38	VT10-24BH375	10-24 X 3/8 BUTTON HEAD CAP SCREW	2

