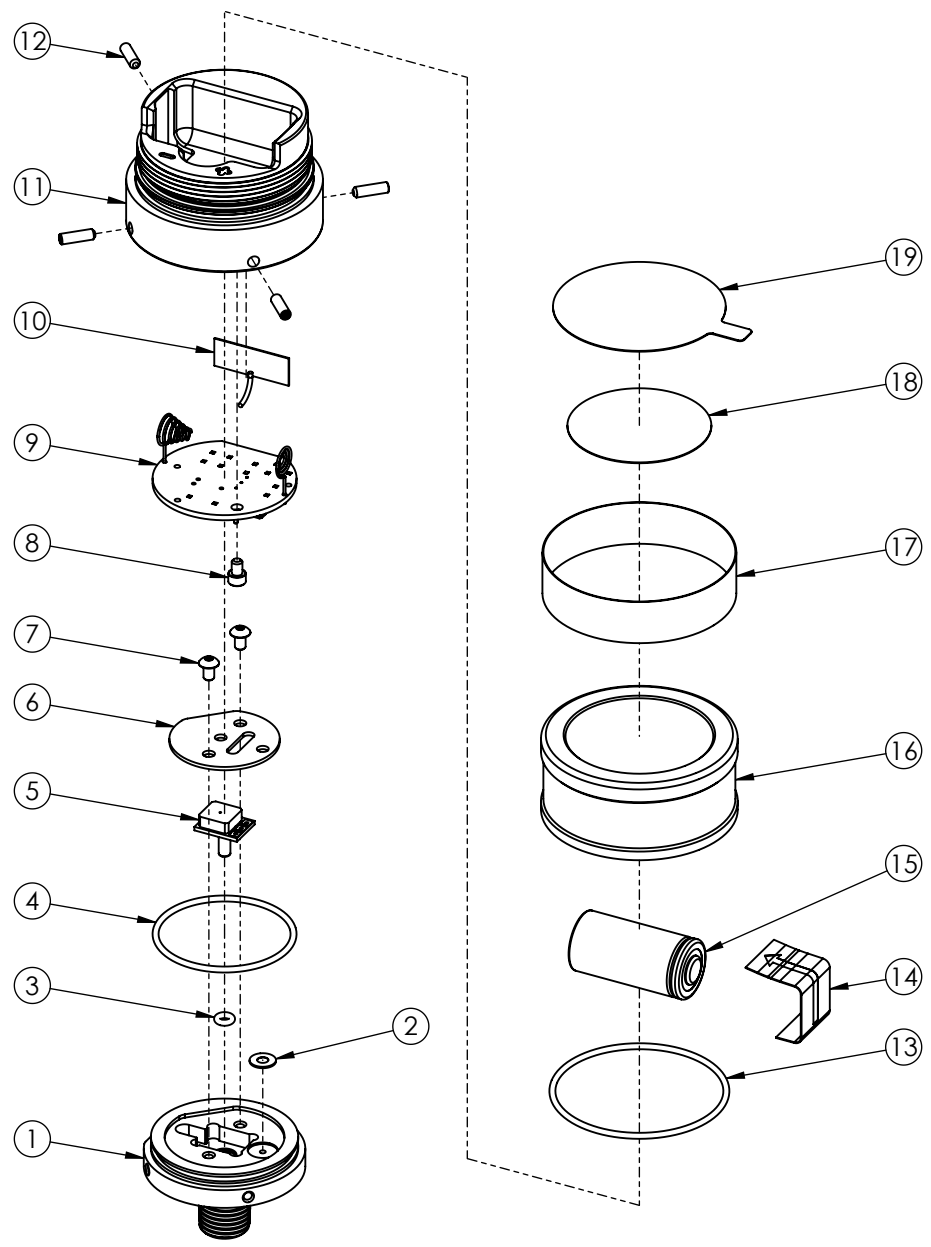


1 2 3 4 5 6

A
B
C
D
E
F
G
H



#19 - REMOVE AND DISPOSE OF LABEL PRIOR TO 1ST USE

#14 - REMOVE AND DISPOSE OF LABEL PRIOR TO 1ST USE

LXE-001

PARTS LIST: ELECTRONIC PRESSURE GAUGE	
SERVICE AND MAINTENANCE	

SHEET: 1 of 2	REV: 0
DATE: 4/14/22	



TASK FORCE TIPS, LLC.
3701 INNOVATION WAY
VALPARAISO, IN 46383 USA
(219)462-6161

ITEM NO.	PART NUMBER	DESCRIPTION	QTY.
1	EPG130	MOUNT	1
2	EPG150	VENT	1
3	VO-005	O-RING 005	1
4	VO-028	O-RING 028	1
5	EPG125	PRESSURE TRANSDUCER	1
6	EPG120	RETAINER	1
7	VT04-40BH188	4-40 X 3/16 BUTTON HEAD SCREW	2
8	VT04-40SH156	4-40 X 5/32 SOCKET HEAD CAP SCREW	1
9	EPG115	BOARD - PRESSURE GAUGE	1
10	EPG016	BLUETOOTH ANTENNA	1
11	EPG110	BODY	1
12	VT04-40SS375	4-40 X 3/8 SOCKET SET SCREW FLAT POINT	4
13	VO-031	O-RING 031	1
14	EPG135	BATTERY INSULATOR ***REMOVE AND DISPOSE OF LABEL PRIOR TO 1ST USE***	1
15	HC123	3V LITHIUM BATT. CR123A TYPE	1
16	EPG100	BATTERY COVER	1
17	EPG101L	NAME LABEL: SHO-GAUGE CAP	1
18	EPG090L	NAME LABEL: SHO-GAUGE CAP	1
19	EPG095L	BATTERY TAB NOTICE: SHO-GAUGE ***REMOVE AND DISPOSE OF LABEL PRIOR TO 1ST USE***	1

LXE-001

PARTS LIST: ELECTRONIC PRESSURE GAUGE
 SERVICE AND MAINTENANCE

SHEET: 2 of 2 REV: 0
 DATE: 4/14/22



TASK FORCE TIPS, LLC.
 3701 INNOVATION WAY
 VALPARAISO, IN 46383 USA
 (219)462-6161