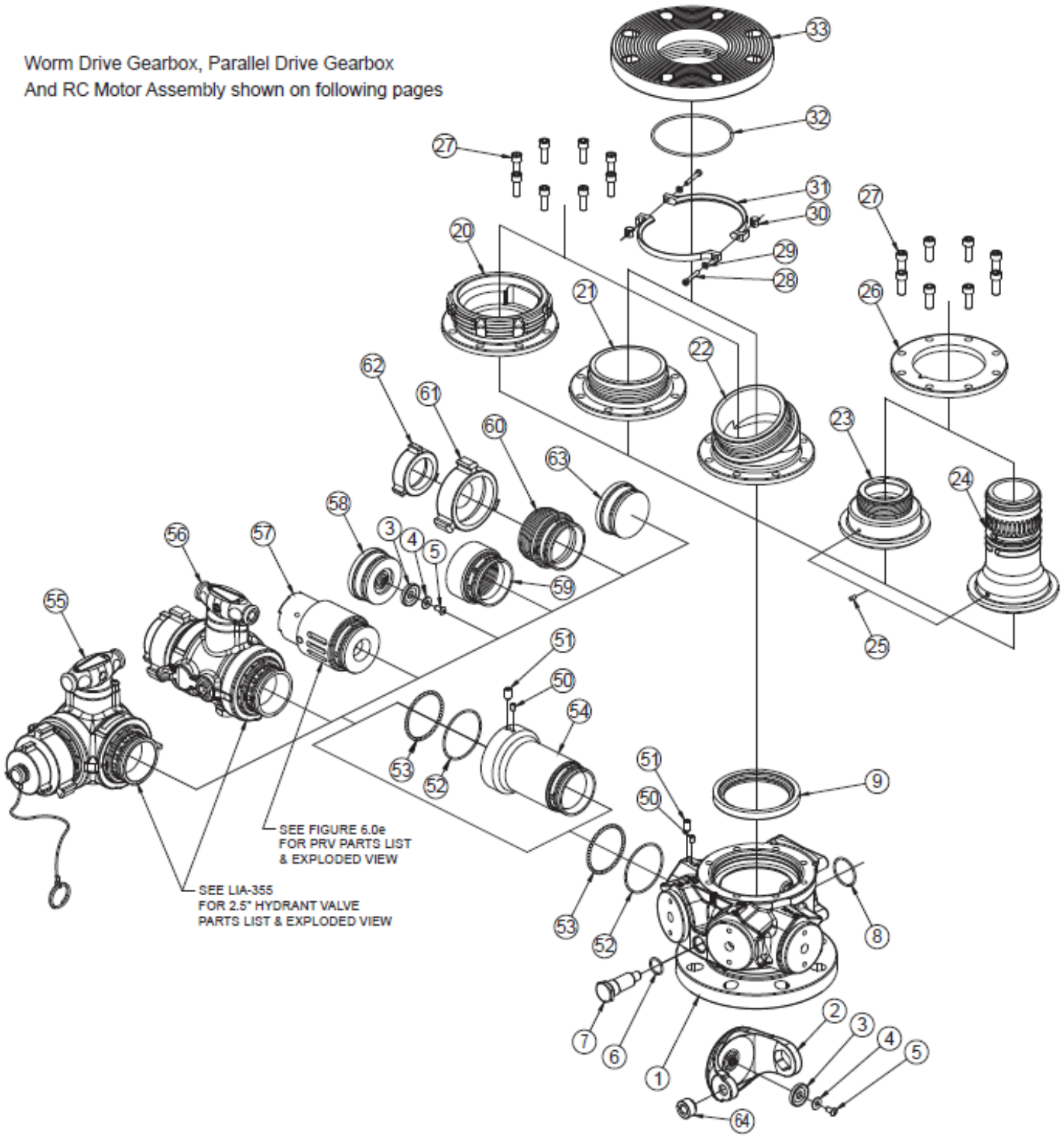


Worm Drive Gearbox, Parallel Drive Gearbox  
And RC Motor Assembly shown on following pages



**MAIN BODY**

INDEX	DESCRIPTION	QTY	PART #
1	VUM BODY	1	A1025
2	HALF BALL WITH DRAIN 5.5"DIA ALUMINUM	1	A1028A
	HALF BALL NO DRAIN 5.5"DIA ALUMINUM	1	A1043A
3	DRAIN VALVE	1	X382
4	SS FLAT WASHER 1/4"	1	VW687X281-50
5	1/4-28 X 1/2 BUTTON HEAD SCREW	1	VT25-28BH500
6	O-RING-117	1	VO-117
7	TRUNNION VUM LOWER	1	A1027
8	O-RING-128	1	VO-128
9	VALVE SEAT 3.65" I.D.	1	A1520

**SIDE B OULET ADAPTER OPTIONS**

INDEX	DESCRIPTION	QTY	PART #
20	QUICK CONNECT - VUM X 4.5"NHM	1	Y4484
21	OUTLET VUM CODE-RPM	1	A1026
22	OUTLET VUM 22.5 DEGREE	1	A1040
23	QUICK CONNECT - VUM X 2.5"NHM	1	Y2432A
24	TORNADO TILLER BASE FOR VUM	1	Y2414A
	TORNADO RC BASE FOR VUM		Y2416A
25	3/16 X 3/8 HDP SPIROL PIN	1	VP188X.38HDP
26	FLANGE VUM FOR SMALL MONITORS	1	Y2433
27	3/8-16 X 1 SOCKET HEAD SCREW	8	VT37-16SH1.0
28	10-32 X 1.2 SOCKET HEAD SCREW	2	VT10-32SH1.2
29	WASHER .360 OD X .200 ID X .040 THICK	2	VW360X200-04
30	CYLINDER NUT	2	Y4437
31	4" MONITOR BASE CLAMP	2	Y4435
32	O-RING-244	1	VO-244
33	FLANGE CODE-RPF X 4"ANSI 150	1	A1039

**AUXILIARY PORT OPTIONS (QTY PER PORT)**

INDEX	DESCRIPTION	QTY	PART #
50	1/4-28 X 3/8 SOCKET SET SCREW	1	VT25-28SS375
51	3/8-16 X 1/2 SOCKET SET SCRW HALF DOG PT	1	VT37-16DP500
52	O-RING-148	1	VO-148
53	3/16" SS BALL	46	V2120
54	EXTENSION TUBE 4.75" LONG	1	A1032
	EXTENSION TUBE 2.75" LONG	1	A1042
55	GATED ELBOW LEFT 2.5"NHM - SUBASSEMBLY	1	AV5LVUM-NJ
	GATED ELBOW RIGHT 2.5"NHM - SUBASSEMBLY		AV5RVUM-NJ
56	VALVE STRAIGHT 2.5"NHM - SUBASSEMBLY	1	AV5VUM-NJ
57	PRESSURE RELIEF VALVE SUB 300PSI	1	A1690
58	DRAIN HOUSING HSBGM275	1	A1023
59	OUTLET HSBGM275 X 2.5"NPTF	1	A1035TJ
60	OUTLET HSBGM275 X 2.5"NHM	1	A1033NJ
	OUTLET HSBGM275 X 2.5"NPTM		A1033TJ
61	ADAPTER 2.5"NHF X 1.5"NHM ROCKERLUG	1	P411NJNF
62	BLIND CAP 1.5"NHF W/ 18" LANYARD	1	P412NF
63	PLUG HSBGM275	1	A1031
64	BUSHING	1	A2095

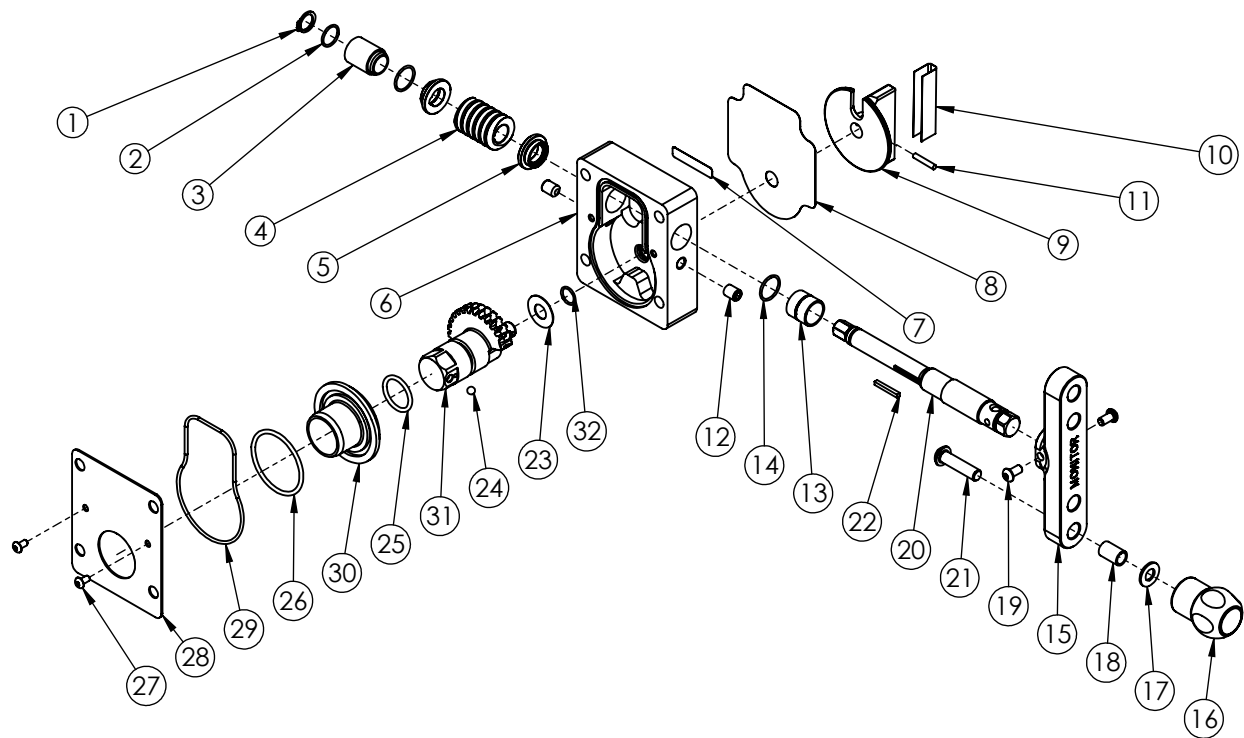
LXA-016

PARTS LIST: VALVE UNDER MONITOR  
MAINTENANCE AND SERVICE

SHEET: 2 of 7  
REV: 0  
DATE: 6/12/24



TASK FORCE TIPS, LLC.  
3701 INNOVATION WAY  
VALPARAISO, IN 46383 USA  
(219)462-6161



LXA-016

PARTS LIST: VALVE UNDER MONITOR  
 MAINTENANCE AND SERVICE

SHEET: 3 of 7  
 REV: 0  
 DATE: 6/12/24



TASK FORCE TIPS, LLC.  
 3701 INNOVATION WAY  
 VALPARAISO, IN 46383 USA  
 (219)462-6161

ITEM NO.	PART NUMBER	DESCRIPTION	QTY.
1	VR4275	RETAINING RING	1
2	VO-016	O-RING 016	1
3	A1528	BUSHING	1
4	x220	12 DP WORM	1
5	A1529	WORM THRUST WASHER	2
6	A1506	GEARBOX	1
7	A1303	MODEL NUMBER LABEL	1
8	A1024	NAME LABEL: VUM GEARBOX	1
9	A1523	POSITION INDICATOR WITH FLAG	1
10	A1524	POSITION INDICATOR LABEL	1
11	V1900	SPIROL PIN	1
12	VT37-16SS500	3/8-16 X 1/2 SOCKET SET SCREW CUP POINT	2
13	A1527	THIN BUSHING	1
14	VO-018	O-RING 018	2
15	A1534	T-HANDLE CRANK	1
16	A1512	KNOB	1
17	VW812X406-65	WASHER	1
18	A1547	CRANK BUSHING	1
19	VT25-20BH500	1/4-20 X 1/2 BUTTON HEAD CAP SCREW	2
20	A1533	SHAFT FOR SEALED GEARBOX	1
21	VT37-16BH1.5	BUTTON HEAD CAP SCREW	1
22	X225	KEY; 1/8" X 1.00"	1
23	A1502	GEAR THRUST WASHER	1
24	vb243to	.243" TORLON BALL	1
25	VO-214	O-RING 214	1
26	VO-226	O-RING 226	1
27	VT10-24BH375	10-24 X 3/8 BUTTON HEAD CAP SCREW	2
28	A1030	GEARBOX COVER	1
29	VO-154	GEAR BOX	1
30	A1511	GEAR SPACER	1
31	A1501	INTEGRAL WORM GEAR & TRUNNION	1
32	VO-014	O-RING 014	1

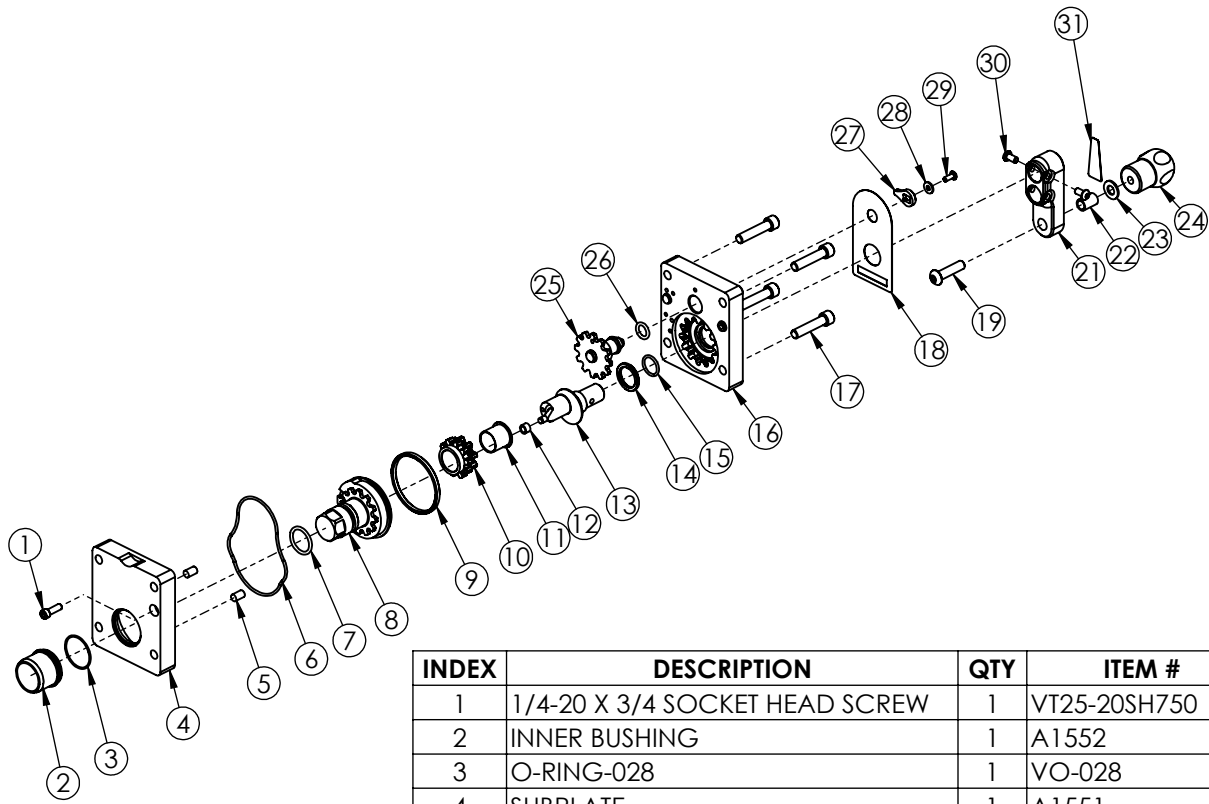
LXA-016

PARTS LIST: VALVE UNDER MONITOR  
MAINTENANCE AND SERVICE

SHEET: 4 of 7  
REV: 0  
DATE: 6/12/24



TASK FORCE TIPS, LLC.  
3701 INNOVATION WAY  
VALPARAISO, IN 46383 USA  
(219)462-6161



INDEX	DESCRIPTION	QTY	ITEM #
1	1/4-20 X 3/4 SOCKET HEAD SCREW	1	VT25-20SH750
2	INNER BUSHING	1	A1552
3	O-RING-028	1	VO-028
4	SUBPLATE	1	A1551
5	DOWEL PIN	2	VP312X.50
6	O-RING-154	1	VO-154
7	O-RING-214	1	VO-214
8	INNER TRUNNION	1	A1553
9	BUSHING	1	A1549
10	DOUBLE GEAR	1	A1554
11	GEAR BUSHING	1	A1548
12	NYLON BUSHING	1	AY307
13	DRIVE SHAFT	1	A1555
14	SPACER	1	A1556
15	O-RING-116	1	VO-116
16	GEAR BOX	1	A1550
17	3/8-16 X 1 1/2 SOCKET HEAD SCREW	4	VT37-16SH1.7
18	MODEL NUMBER LABEL	1	A1303
19	BIV NAME LABEL	1	A1550L
20	3/8-16 X 1-1/2 BUTTON HEAD SCREW	1	VT37-16BH1.5
21	CRANK	1	A1559
22	CRANK BUSHING	1	A1547
23	WASHER	1	VW812X406-65
24	KNOB	1	A1512
25	INDICATOR GEAR	1	A1557
26	O-RING-206	1	VO-206
27	POSITION INDICATOR	1	A1558
28	WASHER	1	VW500X203-60
29	10-24 X 3/8 BUTTON HEAD SCREW	1	VT10-24BH375
30	1/4-20 X 1/2 BUTTON HEAD SCREW	1	VT25-20BH500
31	FOLDING HANDLE LABEL	1	AY342

1 2 3 4 5 6

A

B

C

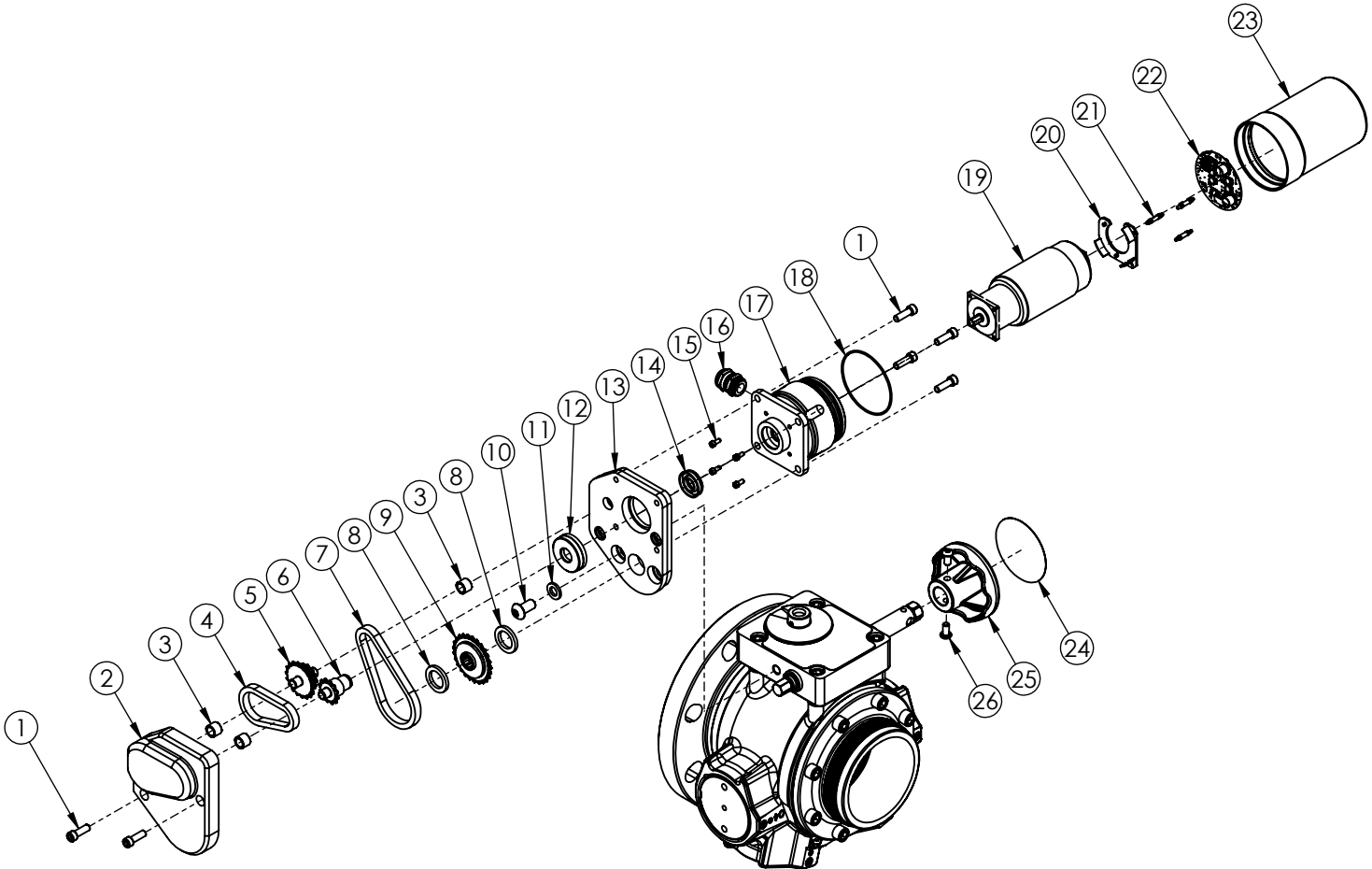
D

E

F

G

H



LXA-016

PARTS LIST: VALVE UNDER MONITOR
MAINTENANCE AND SERVICE

SHEET: 6 of 7	REV: 0
DATE: 6/12/24	



TASK FORCE TIPS, LLC.  
3701 INNOVATION WAY  
VALPARAISO, IN 46383 USA  
(219)462-6161

A  
B  
C  
D  
E  
F  
G  
H

ITEM NO.	PART NUMBER	DESCRIPTION	QTY.
1	VT25-20SH750	1/4-20 X 3/4 SOCKET HEAD CAP SCREW	6
2	A1565	COVER	1
3	X252	BUSHING NYLON	3
4	A1569-28	28 LINK ROLLER CHAIN S.S.	1
5	A1567	DOUBLE SPROCKET 12/18 T	1
6	A1566	12 T SPROCKET	1
7	A1569-40	40 LINK ROLLER CHAIN S.S.	1
8	A1530	THIN WASHER	2
9	A1568	25 T SPROCKET	1
10	VT37-16BH750	3/8-16 X 3/4 BUTTON HEAD CAP SCREW	1
11	VW375SSLOCK	LOCK WASHER 3/8" STAINLESS	1
12	X256	BUSHING MOTOR	1
13	A1564	REDUCER HOUSING	1
14	Y4620	CUP SEAL 1.0625 X .5625 X 1/4	1
15	VT06S32SH312	6-32 X 5/16 SHCS WITH SILICONE HEAD SEAL	4
16	Y5205	STRAIN RELIEF PG11	1
17	Y4615	MOTOR SOCKET	1
18	VO-038	O-RING 038	1
19	Y4611	GEAR MOTOR W/CRIMPED TERMINALS	1
20	Y4643	MOTOR BOARD SUPPORT	1
21	Y5538	CIRCUIT BOARD STANDOFF	3
22	A5825	BOARD - VALVE MOTOR CONTROL	1
23	Y4641	MOTOR ENCLOSURE	1
24	Y4176	OVERRIDE KNOB LABEL	1
25	Z245	KNOB	1
26	VT25-20BH500	1/4-20 X 1/2 BUTTON HEAD CAP SCREW	2

