



Impulse™ Trigger Valve System Maintenance and Service Procedure

⚠ WARNING

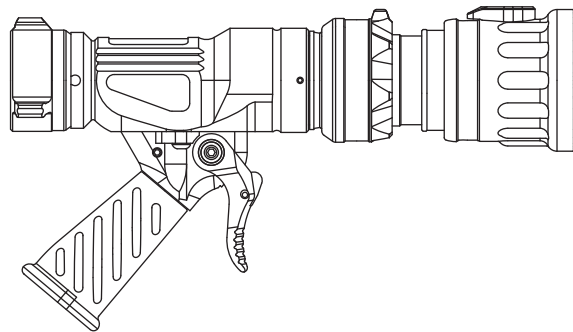
Service technicians bear responsibility for ensuring use of appropriate protective clothing and equipment. The chosen protective clothing and equipment must provide protection from potential hazards users may encounter while servicing equipment. Requirements for protective clothing and equipment are determined by the Authority Having Jurisdiction (AHJ).

⚠ WARNING

After any maintenance or service, equipment must be inspected and tested for proper operation and function per NFPA 1962 test procedures and the FLOW CHARACTERISTICS and OPERATION and INSPECTION CHECKLIST in the operator manual.

NOTICE

This publication is intended for those who prefer to perform service on their own equipment. Factory service is available and repair time seldom exceeds one day in our facility. Factory serviced nozzles are repaired by experienced technicians, fully tested, and promptly returned functioning to original specifications. Task Force Tips assumes no liability for damage to equipment or injury to personnel that is a result of user service.



1.0 GENERAL INFORMATION

1.1 REQUIRED TOOLS

Tools for General Service	
5/32" Hex Key	Vise with Padded Jaws
Appropriate replacement Trigger Assembly	Loctite® #242 thread locker or equivalent

1.2 LUBRICANTS

If parts are disassembled in an area where O-rings are present, re-assemble using Molykote #112 High Performance Silicone Grease on all O-rings and surfaces that the O-rings contact. If nozzle is not disassembled, refer to the field lubrication procedure in the nozzle manual.

⚠ CAUTION

Aerosol lubricants contain solvents that can swell O-Rings if applied in excess. The swelling can inhibit smooth operation of the moving parts. When used in moderation, as directed, the solvents quickly evaporate without adversely swelling the O-Rings.

1.3 ORDERING PARTS

Always specify the serial number of the nozzle when ordering parts. The serial number is found on the top of the VALVE BODY. Be sure to use complete DESCRIPTION and PART #, as printed on parts list. All requests for couplings must specify thread size. Pricing information will be given at time of order.

TASK FORCE TIPS LLC
MADE IN USA · tft.com

3701 Innovation Way, Valparaiso, IN 46383-9327 USA
800-348-2686 · 219-462-6161 · Fax 219-464-7155

2.0 TRIGGER REPLACEMENT

2.1 TRIGGER REMOVAL SEQUENCE



STEP 1

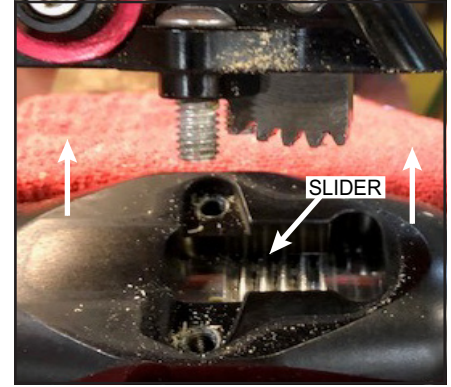
To ensure a consistent slider position, the trigger should be in the closed position prior to removing the assembly.

Secure the VALVE BODY in a padded vise to keep it steady. To prevent damage to the body, do not overtighten.



STEP 2

Using a 5/32" Hex Key, remove (2) VT25-20BH875 screws. Retain the screws for reassembly.



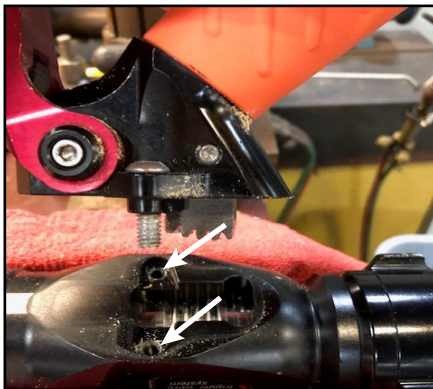
STEP 3

Carefully lift the Trigger assembly straight up to remove. Do not move the position of the SLIDER.

STEP 4

Use an air gun or shop rag to remove any debris from the gear rack on the SLIDER. Do not move the position of the SLIDER.

2.2 TRIGGER REPLACEMENT SEQUENCE



STEP 1

Apply Loctite #242 or equivalent to the threaded holes in the VALVE BODY.



STEP 2

Install the TRIGGER assembly so the gear rack on the trigger meshes with the gear rack on the SLIDER, and the TRIGGER BODY is flat against the VALVE BODY.



STEP 3

Using a 5/32" Hex Key, thread (2) VT25-20BH875 screws into the VALVE BODY until tight.

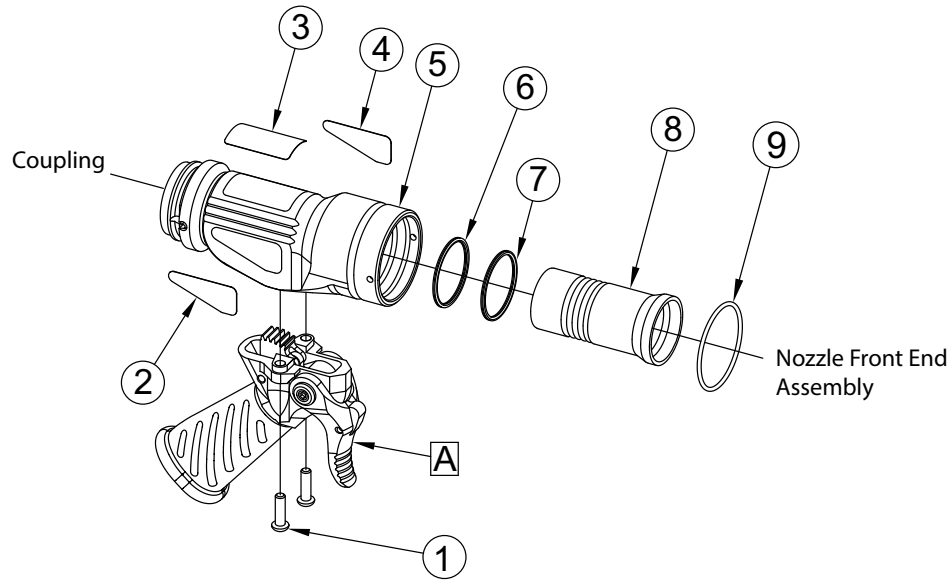
STEP 4

Remove the assembly from the vise and orient it in the normal operating position. Hold this position for a couple of minutes to allow the damping fluid in the trigger to settle.

STEP 5

Test the assembly by squeezing and releasing the trigger several times. The valve should fully open and close smoothly. If the trigger does not function properly, it may be necessary to remove and reinstall.

3.0 EXPLODED VIEW AND PARTS LIST



	DESCRIPTION	QTY	PART #	USED IN
1	1/4-20 X 7/8 BUTTON SCREW	2	VT25-20BH875	ALL
2	LABEL: RIGHT	1	TN600LR	ALL
3	LABEL: TOP	1	TN600LT	ALL
4	LABEL: LEFT	1	TN600LL	ALL
5	VALVE BODY	1	TN600G15	1.5" G-Force w/1" valve
			TN600G10	1.5" G-Force w/1.5" valve
			TN600B	Ultimatic Ice Control Metro 0
			TN600GD	1.0" G-Force
			TN600HM	Midrange Metro 1
6&7	QUAD-RING ****	2	VOQ-4130	1.5" G-Force w/1" valve Midrange Metro 1
			VOQ-4125	1.5" G-Force w/1.5" valve
6	QUAD-RING ****	1	VOQ-4124	Ultimatic Ice Control
7	QUAD-RING ****P	1	VOQ-4125P	Metro 0 1.0" G-Force
8	SLIDER	1	TN660B	Ultimatic Metro 0
				1.0" G-Force
				1.5" G-Force w/1" valve
			TN660HM	1.5" G-Force w/1.5" valve
			TN661B	Midrange Metro 1 Ice Control
9	O-RING ***	1	VO-139	Midrange Metro 1
				1.0" G-Force
			VO-136	1.5" G-Force w/1.5" valve
				1.5" G-Force w/1.0" valve
			VO-030	Ultimatic Metro 0 Ice Control

A	
TRIGGER ASSY	USED IN
TN900	Metro 0 Metro 1
	1.0" G-Force
	Midrange
	1.5" G-Force w/1.0" valve
TN900HP	1.5" G-Force w/1.5" valve
	High Pressure 1.5" G-Force w/ 1.0" Valve
	High Pressure 1.0" G-Force
TN900ET	High Pressure Ultimatic
	Ice Control
AVAILABLE SERVICE KITS	USED IN
TN900-KIT	Metro 0 Metro 1
	1.0" G-Force
	Midrange
	1.5" G-Force w/1.0" valve
TN900-HP-KIT	1.5" G-Force w/1.5" valve
	High Pressure 1.5" G-Force w/ 1.0" Valve
	High Pressure 1.0" G-Force
	High Pressure Ultimatic

For questions regarding troubleshooting, parts, or repair, contact your local dealer or TFT's service department.

TASK FORCE TIPS LLC
MADE IN USA · tft.com

3701 Innovation Way, Valparaiso, IN 46383-9327 USA
800-348-2686 · 219-462-6161 · Fax 219-464-7155