

LOW-LEVEL STRAINER

DELIVER WATER WHEN AND WHERE YOU NEED IT

TFT's Low-Level Strainer can be optioned with a swiveling Jet Siphon and a rugged float to maximize water delivery operations. The strainer's compact and flow efficient design results in only .9 psi (.06 bar) of friction loss at 2,000 gpm (7600 l/min). It can be easily stored in an apparatus compartment and allows for quick deployment with suction hose to a portable tank or natural water supply.



Low-Level Strainer with or without Jet Siphon

The Jet Siphon swivels for a fast connection to any hoseline with 1.5 inch (38 mm) couplings and has a maximum operating inlet pressure of 200 psi (13.8 bar). When connected, the Jet Siphon allows the fire department to pressurize a hoseline that will feed into the strainer. The Jet Siphon substantially increases suction lift capability and is also useful for tank shuttle, pump priming and dewatering with no need for a trash pump.



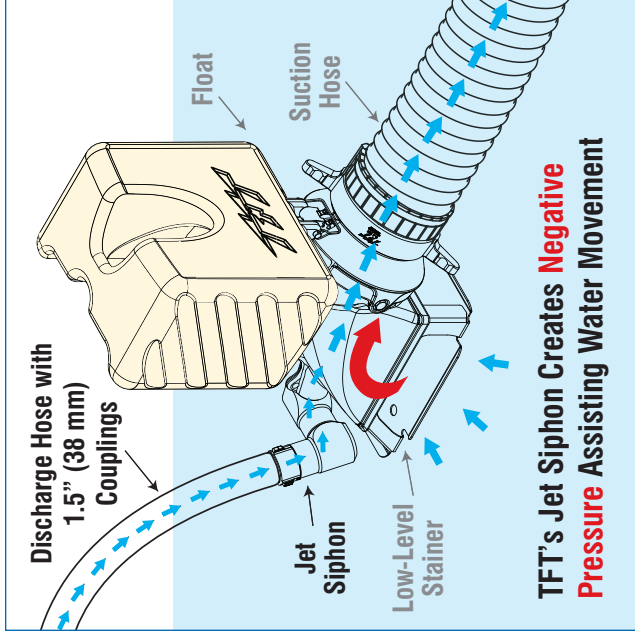
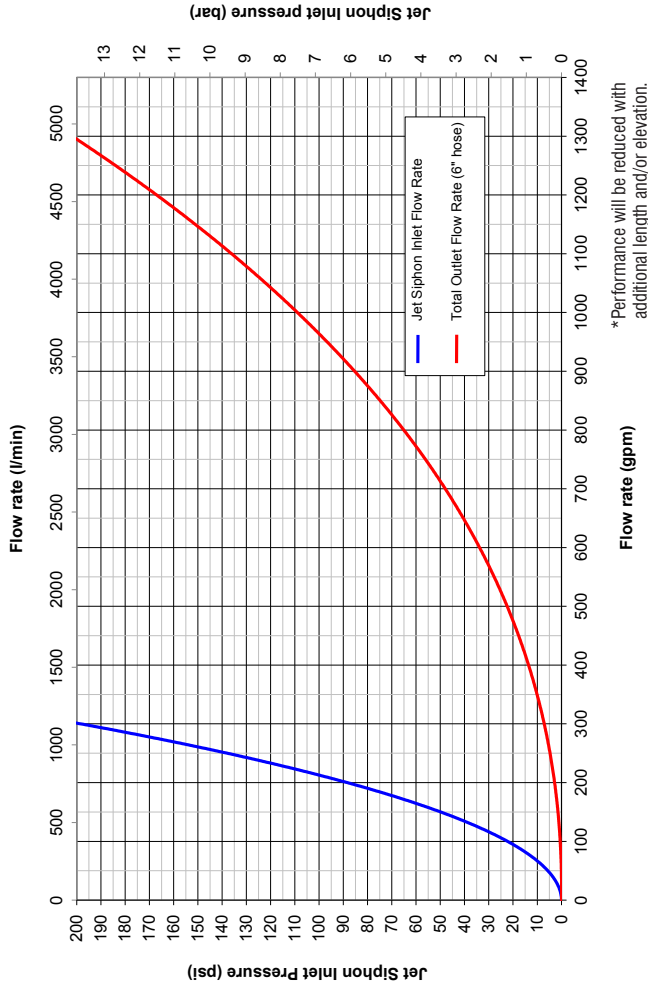
Low-Level Floating Strainer with or without Jet Siphon

The optional high visibility float for the Low-Level Strainer submerges the swiveling inlet 18" (46 cm) below the surface of the water to avoid sucking air and debris. The float nests directly with the body of the strainer with or without the Jet Siphon.

The compact design allows often used equipment to be stacked on top of the flat surface of the float maximizing compartment space. A tethered latching hinge pin allows the float to be removed or installed instantly if desired.

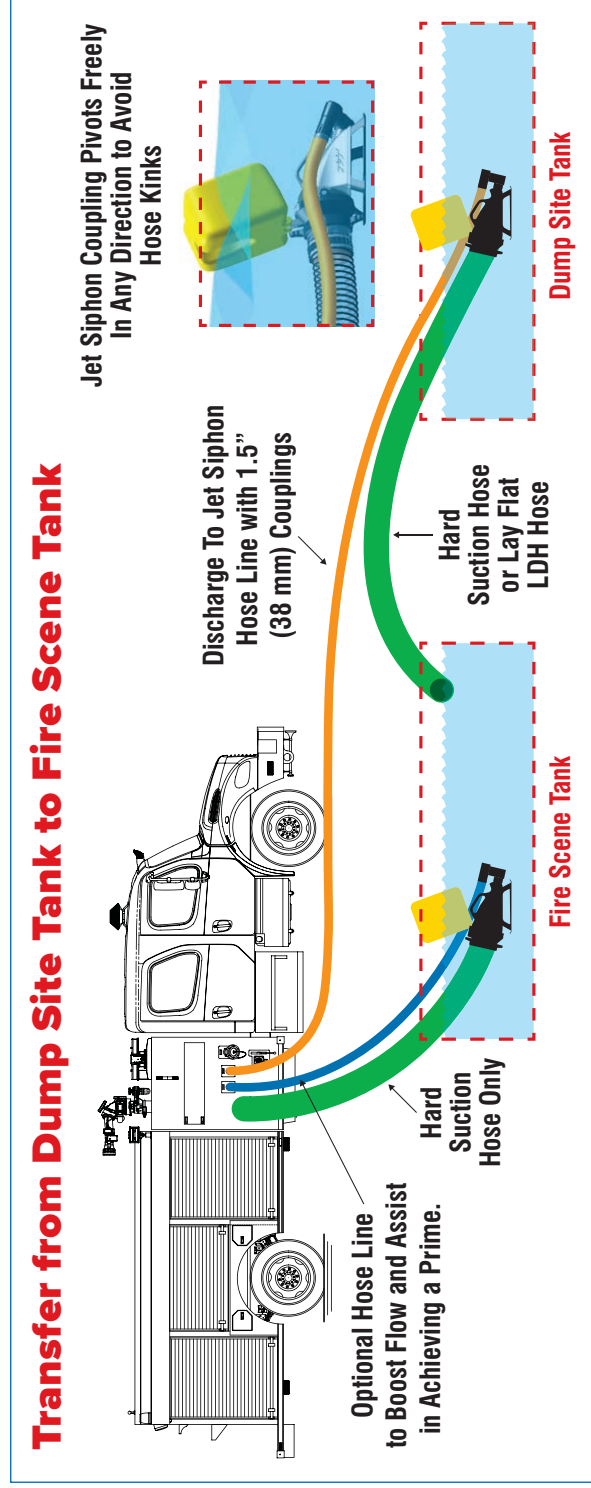


**Low-Level Floating Strainer with Jet Siphon Tank to Tank Transfer
Total Outlet Flow Rate (10 ft of 6" hose*) Resulting from Jet Siphon Inlet Flow Rate**



TFT's Jet Siphon Creates Negative Pressure Assisting Water Movement

Transfer from Dump Site Tank to Fire Scene Tank



MADE IN USA

800 • 348 • 2686

BARREL STRAINER

JUMBO BARREL STRAINER

Heavy duty barrel strainer gives maximum flow capability. The impact resistant polymer won't dent when dropped and won't corrode even in contaminated water. The wavy straining pattern resists debris sucking flat against the holes. 240 holes total 48 square inches of flow area. An oversize loop makes tying off the strainer easy. The coupling is made from hard anodized aluminum and rotates easily on a polymer bearing ring.



A02

COUPLING

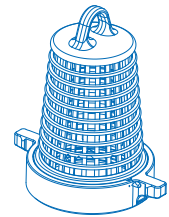
NJ) 2.5" NH (65mm) Swivel Female Rocker Lug
NP) 4.0" NH (100mm) Swivel Female Rocker Lug
HNT) 5.0" NH (127mm) Swivel Female Long Handle
HNX) 6.0" NH (152mm) Swivel Female Long Handle
SP) 4.0" (110mm) Storz*

-Y) Barrel Color
 Yellow (omit for standard Black)

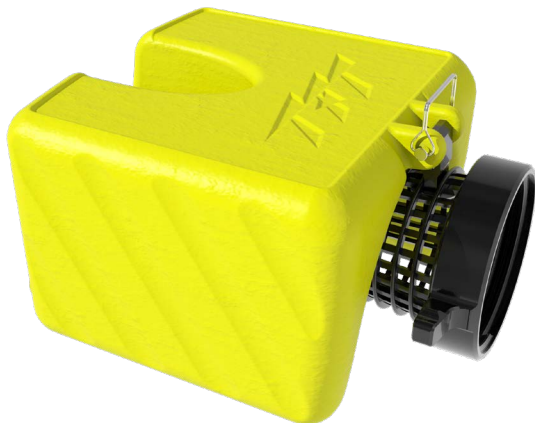
* Coupling = SP

DIMENSIONAL MAXIMUM

6" (152mm) Max Coupling Size
 4.0 lb (1.8kg)
 12.00" (305.0mm) Length
 8" (203mm) Diameter



FLOATING BARREL STRAINER



A06

- **Extremely Light Weight** – Float and strainer basket made from corrosion proof hi-tech polymers.
- **Easily Detachable Float** – Quick conversion to simple barrel strainer
- **Low Cost** – Best value, highest performance
- **Compact** – Stores in small space
- **Flow Efficient Design** – Permits high flows
- **Versatile** – Can be used in open bodies of water, or portable tanks
- **Swivel Inlet Fitting** – Quick and easy installation to suction hose
- **Low-riding Barrel** – Reduces risk of roll-over

