

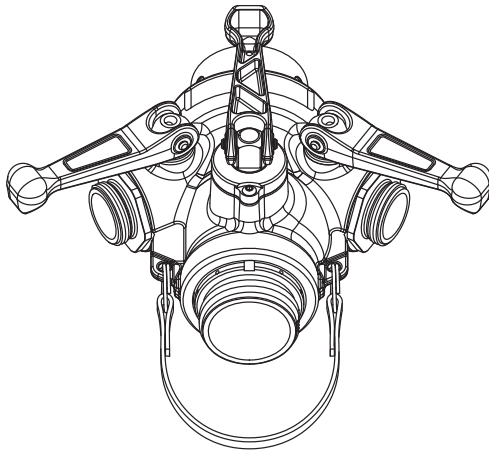


MANUAL: 2.5" by 1.5" "WATER THIEF"

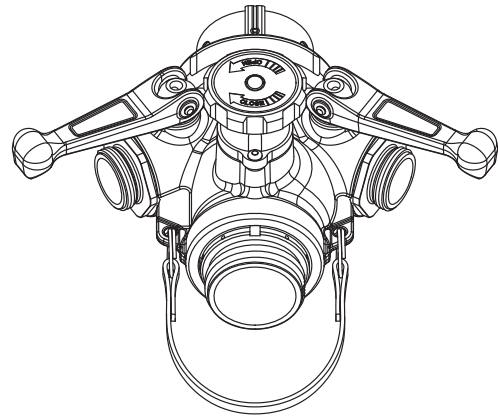
INSTRUCTIONS FOR SAFE OPERATION AND MAINTENANCE

⚠ DANGER

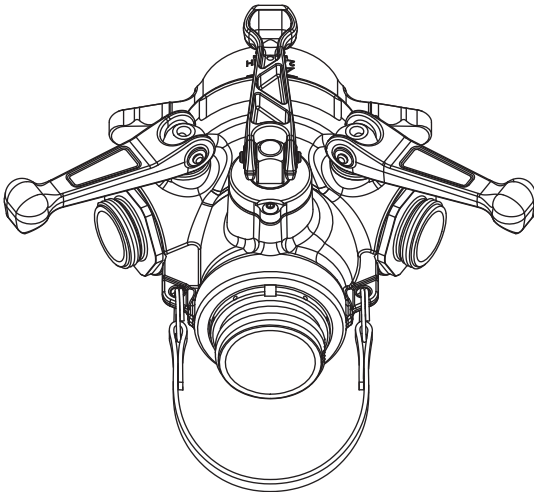
Understand manual before use. Operation of this device without understanding the manual and receiving proper training is a misuse of this equipment. Obtain safety information at www.tft.com/serial-number



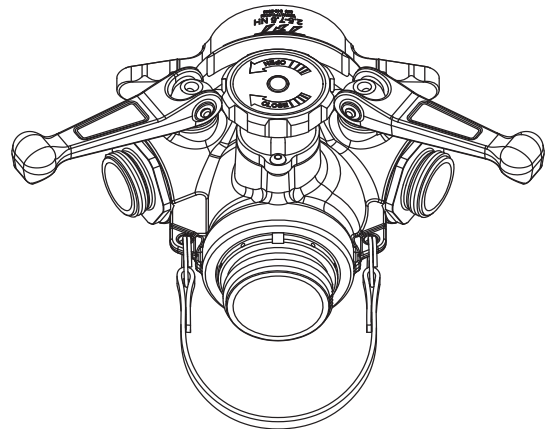
WT5NJ-NJ-NF
(rockerlug inlet,
folding valve handles all ports)



WT5NJ-NJ-NF-SC
(rockerlug inlet,
slow close center port)



WT5HNJ-NJ-NF
(handled coupling inlet,
folding valve handles all ports)



WT5HNJ-NJ-NF-SC
(handled coupling
inlet,slow close center port)

OPERATING RANGE
Pressure Max 300 PSI (20 bar)
Pressure Min Full Vac.

Hydrostatic Proof Test:
900 PSI (60 bar)

TASK FORCE TIPS, INC.
MADE IN USA • www.tft.com

3701 Innovation Way, Valparaiso, IN 46383-9327 USA
800-348-2686 • 219-462-6161 • Fax 219-464-7155



PERSONAL RESPONSIBILITY CODE

The member companies of FEMSA that provide emergency response equipment and services want responders to know and understand the following:

1. Firefighting and Emergency Response are inherently dangerous activities requiring proper training in their hazards and the use of extreme caution at all times.
2. It is your responsibility to read and understand any user's instructions, including purpose and limitations, provided with any piece of equipment you may be called upon to use.
3. It is your responsibility to know that you have been properly trained in Firefighting and /or Emergency Response and in the use, precautions, and care of any equipment you may be called upon to use.
4. It is your responsibility to be in proper physical condition and to maintain the personal skill level required to operate any equipment you may be called upon to use.
5. It is your responsibility to know that your equipment is in operable condition and has been maintained in accordance with the manufacturer's instructions.
6. Failure to follow these guidelines may result in death, burns or other severe injury.



Fire and Emergency Manufacturers and Service Association
P.O. Box 147, Lynnfield, MA 01940 • www.FEMSA.org

- 1.0 MEANING OF SAFETY SIGNAL WORDS
- 2.0 SAFETY
- 3.0 GENERAL INFORMATION
 - 3.1 CORROSION
 - 3.2 USE WITH SALT WATER
- 4.0 DRAWINGS AND PART LISTS
 - 4.1 SECTION A
 - 4.2 SLOW CLOSE VALVE TIMING
- 5.0 WARRANTY
- 6.0 MAINTENANCE
 - 6.1 SERVICE TESTING
 - 6.1.1 HYDRAULIC TEST
 - 6.1.2 SHUTOFF VALVE TEST
 - 6.1.3 RECORDS
 - 6.2 REPAIR
- 7.0 ANSWERS TO YOUR QUESTIONS
- 8.0 OPERATION and INSPECTION CHECKLIST

1.0 MEANING OF SAFETY SIGNAL WORDS

A safety related message is identified by a safety alert symbol and a signal word to indicate the level of risk involved with a particular hazard. Per ANSI standard Z535.6-2011, the definitions of the four signal words are as follows:

⚠ DANGER

DANGER indicates a hazardous situation which, if not avoided, will result in death or serious injury.

⚠ WARNING

WARNING indicates a hazardous situation which, if not avoided, could result in death or serious injury.

⚠ CAUTION

CAUTION indicates a potentially hazardous situation which, if not avoided, could result in minor or moderate injury.

NOTICE

NOTICE is used to address practices not related to physical injury.

SAFETY INSTRUCTIONS (or equivalent) signs indicate specific safety-related instructions of procedures

2.0 SAFETY

⚠ WARNING

Quick changes in valve position can cause high pressure spikes due to water hammer and may result in damaged equipment which could lead to injury or death. Open and close the valve slowly to avoid water hammer.

⚠ WARNING

Kinks in supply hose may reduce water flow and cause injury or death to persons dependant on water flow. Avoid tight bends to minimize risk of hoseline kinks.

⚠ WARNING

This equipment is intended for use by trained personnel for firefighting. Their use for other purposes may involve hazards not addressed by this manual. Seek appropriate guidance and training to reduce risk of injury.

⚠ WARNING

Kinks in supply hose may reduce water flow and cause injury or death to persons dependent on water flow. Avoid tight bends to minimize risk of hoseline kinks.

⚠ WARNING

The appliance may be damaged if frozen while containing significant amounts of water. Such damage may be difficult to detect visually and can lead to possible injury or death. Any time the appliance is subject to possible damage due to freezing, it must be hydrostatically tested by qualified personnel before being considered safe for use.

⚠ CAUTION

Maximum operating pressure 300 psi (20 bar). Do not exceed 300 psi (20 bar) on either side of the valve.

⚠ CAUTION

Valve must be properly connected. Mismatched or damaged threads may cause appliance to leak or uncouple under pressure and could cause injury.

⚠ CAUTION

Do not connect aluminum to brass or brass to aluminum. Dissimilar metals coupled together can cause galvanic corrosion that will freeze the threaded joint or cause complete loss of thread engagement. If dissimilar metals must be coupled together, the effects of corrosion can be greatly delayed by various coatings on the metal such as powder paint, hard anodizing, or silicone grease.

NOTICE

To prevent mechanical damage, do not drop or throw equipment.

3.0 GENERAL INFORMATION

The 2 ½ by 1 ½ inch Water Thief is a lightweight valve with full 2 1/2 and 1 ½ inch waterways. All valves work easily at maximum pressure of 300 psi (20 bar) from either side of the valve. Field replaceable valve seats. Special internal contour on 1 ½ inch side valves keeps them in position while flowing. Folding valve handles minimize storage space.

The center 2 ½ inch port is available with quarter-turn folding lever handles or with an easy grip hand wheel. An automatic valve lock on lever operated models holds valve position while flowing at partial openings. The lock is released by moving the lever and resets itself. Models with easy grip hand wheel meet NFPA 1965 slow close requirements and include a valve position indicator that rises up as the valve is opened. Indicator is flush with the hand wheel when the valve is closed. Position can be verified even in zero visibility.

Pipe threaded port for pressure gage. Carrying strap assists in carrying and dragging hose.

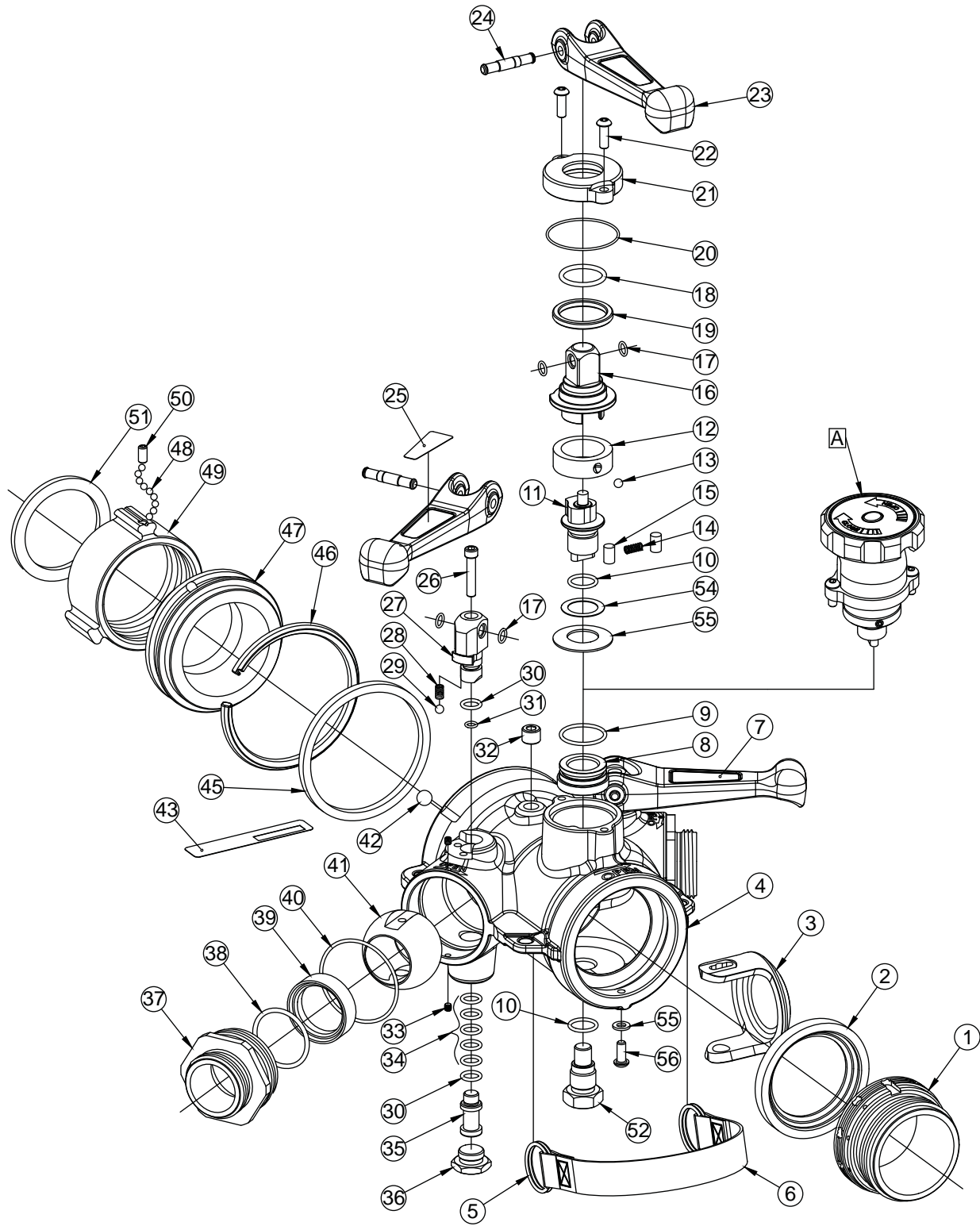
3.1 CORROSION

Aluminum parts are hard anodized. All castings are then powder coated inside and out to help prevent corrosion. The effects of corrosion can be minimized by coupling this valve only to aluminum hose connections and with good maintenance practice. See section 6 for maintenance.

3.2 USE WITH SALT WATER

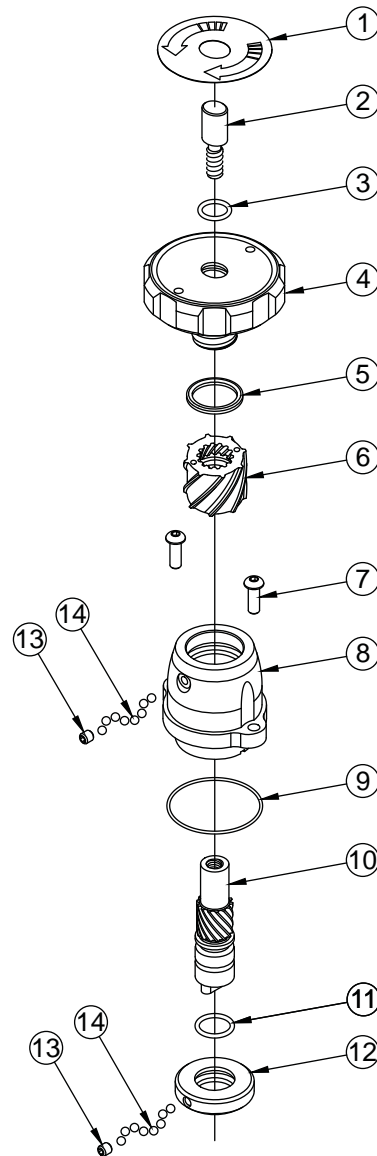
Use with salt water is permissible provided valve is thoroughly cleaned with fresh water after each use. The service life of the valve may be shortened due to the effects of corrosion and is not covered under warranty.

4.0 DRAWINGS AND PARTS LISTS



INDEX	DESCRIPTION	QTY	PART #
1	SIDE B ADAPTER 2 1/2 NH	1	AY360NJ
2	VALVE SEAT	1	AY315
3	HALF BALL	1	AY310
4	WATER THIEF BODY	1	AY302
5	STAINLESS KEY RING	2	X342
6	CARRYING STRAP	1	AY303
7	FOLDING HANDLE LABEL - BLUE	1	AY342-BLU
8	INNER BUSHING	1	AY351
9	O-RING-123	1	VO-123
10	O-RING-115	2	VO-115
11	INNER UPPER TRUNNION	1	AY350
12	FLOATING RING	1	AY352
13	1/4" SS BALL	1	V2125
14	CONTACT SPRING	1	HC115
15	DOWEL PIN	2	VP312X.50
16	OUTER UPPER TRUNNION	1	AY320
17	O-RING-011	6	VO-011
18	O-RING-216	1	VO-216
19	BUSHING	1	AY324
20	O-RING-033	1	VO-033
21	TRUNNION RETAINER	1	AY354
22	1/4-20 X 3/4 BUTTON HEAD SCREW	2	VT25-20BH750
23	VALVE HANDLE	3	AY340
24	HANDLE PIVOT PIN	3	AY345
25	FOLDING HANDLE LABEL - RED	1	AY342-RED
26	1/4-20 X 1-1/4 SOCKET HEAD SCREW	2	VT25-20SH1.2
27	FOLDING HANDLE UPPER TRUNNION	2	AY306
28	DETENT SPRING	2	HM770
29	.243" TORLON BALL	2	VB243TO
30	O-RING-111	4	VO-111
31	O-RING-010	2	VO-010
32	1/4"NPT PLUG	1	VFSP2M-SS
33	10-32 X 3/16 SET SCREW	4	VT10Y32SS187
34	QUAD-RING-111	10	VOQ-4111
35	145 TRUNNION	2	F14045
36	TRUNNION CAP	2	AY304
37	OUTLET 1.5"NH	2	AY160N
38	O-RING-223	2	VO-223
39	VALVE SEAT	2	AY140
40	O-RING-143	2	VO-143
41	VALVE BALL	2	AY110
42	7/16" SS BALL	1	VB.437
43	WYE AND HYDRANT VALVE LABEL	1	AY305
45	CUP SEAL LOADED	1	A1597
46	PLASTIC STRIP 4.25"	1	A1292
47	MATE 3.0"HSBGM X PSM4.25	1	A4710
48	3/16" SS BALL	48	V2120
49	COUPLING 2.5"NH	1	M307N
50	1/4-28 X 1/2 SOCKET SET SCREW	1	VT25-28SS500
51	GASKET - 2.5"	1	V3190
52	LOWER TRUNNION	1	AY353
53	1/4-20 X 5/8 SOCKET SET SCREW	1	VT25-20SS625
54	WASHER	1	G636-020
55	BELLEVILLE SPRING	1	AY325
56	1/4-20 X 5/8 BUTTON HEAD SCREW	1	VT25-20BH625
57	WASHER	1	VW500X265-63
A	LEFT HAND SLOW CLOSE VALVE SUBASSEMBLY	1	AY970L

4.1 SECTION A

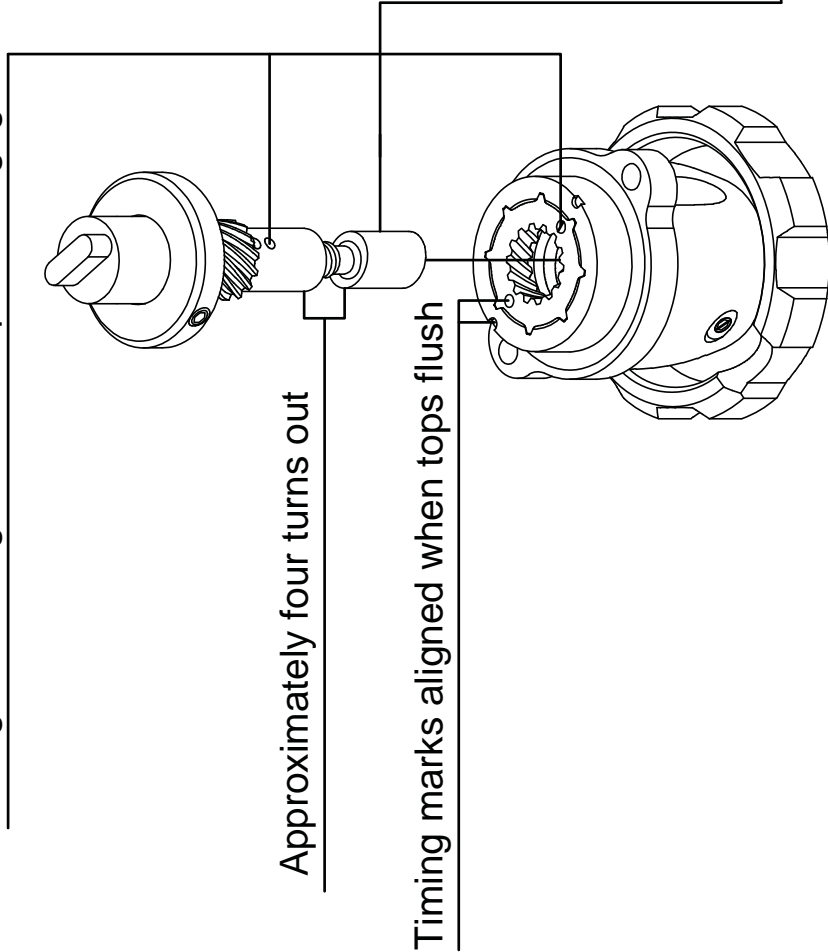


INDEX	DESCRIPTION	QTY	PART#
1	LABEL	1	AY370L
2	INDICATOR	1	AY375
3	O-RING-113	1	VO-113
4	KNOB	1	AY370
5	QUAD-RING-214	1	VOQ-4214
6	LEFT SLEEVE	1	AY371L
7	1/4-20 X 3/4 BUTTON HEAD SCREW	2	VT25-20BH750
8	STATOR LEFT	1	AY373L
9	O-RING-033	1	VO-033
10	LOWER LEFT TRUNNION	1	AY374L
11	O-RING-115	1	VO-115
12	RETAINER	1	AY372
13	1/4-28 X 1/4 SOCKET SET SCREW	2	VT25-28SS250
14	3/16" SS BALL (20 PER UPPER RACE)	34	V2120

4.2 SLOW CLOSE VALVE TIMING

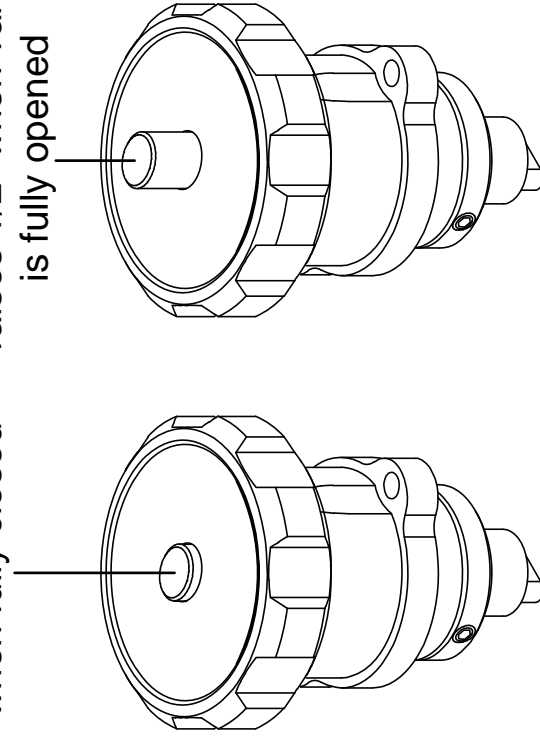
**3-1/2 Turns
Full Closed to Full Open**

Timing marks aligned when spines engage



Indicator flush when fully closed

Valve position indicator raises 1/2" when valve is fully opened



LEFT SHOWN

Right parts similar with only one timing mark instead of two.

5.0 WARRANTY

Task Force Tips, Inc., 3701 Innovation Way, Valparaiso, Indiana 46383-9327 USA (“TFT”) warrants to the original purchaser of its nozzles and other equipment (“equipment”), and to anyone to whom it is transferred, that the equipment shall be free from defects in material and workmanship during the five (5) year period from the date of purchase.

TFT’s obligation under this warranty is specifically limited to replacing or repairing the equipment (or its parts) which are shown by TFT’s examination to be in a defective condition attributable to TFT. To qualify for this limited warranty, the claimant must return the equipment to TFT, at 3701 Innovation Way, Valparaiso, Indiana 46383-9327 USA, within a reasonable time after discovery of the defect. TFT will examine the equipment. If TFT determines that there is a defect attributable to it, TFT will correct the problem within a reasonable time. If the equipment is covered by this limited warranty, TFT will assume the expenses of repair.

If any defect attributable to TFT under this limited warranty cannot be reasonably cured by repair or replacement, TFT may elect to refund the purchase price of the equipment, less reasonable depreciation, in complete discharge of its obligations under this limited warranty. If TFT makes this election, claimant shall return the equipment to TFT free and clear of any liens and encumbrances.

This is a limited warranty. The original purchaser of the equipment, any person to whom it is transferred, and any person who is an intended or unintended beneficiary of the equipment, shall not be entitled to recover from TFT any consequential or incidental damages for injury to person and/or property resulting from any defective equipment manufactured or assembled by TFT. It is agreed and understood that the price stated for the equipment is in part consideration for limiting TFT’s liability. Some states or countries do not allow the exclusion or limitation of incidental or consequential damages, so the above may not apply to you.

TFT shall have no obligation under this limited warranty if the equipment is, or has been, misused or neglected (including failure to provide reasonable maintenance) or if there have been accidents to the equipment or if it has been repaired or altered by someone else.

THIS IS A LIMITED EXPRESS WARRANTY ONLY. TFT EXPRESSLY DISCLAIMS WITH RESPECT TO THE EQUIPMENT ALL IMPLIED WARRANTIES OF MERCHANTABILITY AND ALL IMPLIED WARRANTIES OF FITNESS FOR A PARTICULAR PURPOSE. THERE IS NO WARRANTY OF ANY NATURE MADE BY TFT BEYOND THAT STATED IN THE DOCUMENT.

This limited warranty gives you specific legal rights, and you may also have other rights which vary from state to state.

6.0 MAINTENANCE

TFT appliances are designed and manufactured to be damage resistant and require minimal maintenance. However, as the primary firefighting tool upon which your life depends, it should be treated accordingly. Do not drop or throw equipment.

This valve should be disconnected, cleaned and visually inspected inside and out at least quarterly for proper function per NFPA 1962 section 8.2, or as water quality and use may require. Moving parts such as handles, valve ball and couplings should be checked for smooth and free operation. Seals shall be greased as needed with a silicone-based grease such as Dow Corning 112. Any scrapes that expose bare aluminum should be cleaned and touched up with enamel paint such as Rust-Oleum. Replace any missing or damaged parts before returning to service. Any repaired device must be tested before being placed in service.

6.1 SERVICE TESTING

In accordance with NFPA 1962 (2013), appliances must be tested a minimum of annually. Nozzles failing any part of this test must be removed from service, repaired and retested upon completion of the repair.

6.1.1 HYDRAULIC TEST

1. The appliance being tested shall be positioned in a protective device or cover capable of holding the appliance and tested to a minimum hydrostatic pressure of 300 psi (20.7 bar or 2070 kPa).
2. Test caps capable of withstanding the required hydrostatic pressure shall be attached to openings, and a device capable of exerting the required hydrostatic pressure shall be attached to the appliance.
3. Appliances with relief valves shall have the relief valve outlet blanked off or otherwise closed during the test.
4. All air shall be bled from the system.
5. The gauge pressure shall be increased by 50 psi (3.45 bar or 345 kPa) increments and held for 30 seconds at each pressure up to the maximum pressure for which the appliance is being tested and held for 1 minute without leakage.

6.1.2 SHUTOFF VALVE TEST

1. If the appliance has a shutoff valve, the intake side of the shutoff valve shall be hydrostatically pressurized to the maximum working pressure of the appliance with the valve in the shutoff position.
2. There shall be no leakage through the valve.
3. A water flow through the fire hose appliance at 100 psi (6.9 bar or 690 kPa) shall be established.
4. The valve shall be closed and reopened twice and shall operate smoothly without evidence of binding or other problems.

6.1.3 RECORDS

A record of testing and repairs must be maintained from the time the nozzle is purchased until it is discarded. Each TFT appliance is engraved with a unique serial number which, if so desired, can be used to identify nozzle for documentation purposes.

The following information, if applicable, must be included on the test record for each nozzle:

1. Assigned identification number
2. Manufacturer
3. Product or model designation
4. Vendor
5. Warranty
6. Hose connection size
7. Maximum operating pressure
8. Flow rate or range
9. Date received and date put in service
10. Date of each service test and service test results
11. Damage and repairs, including who made the repairs and the cost of repair parts
12. Reason removed from service

NFPA 1962: Standard for the care, use, inspection, service testing, and replacement of fire hose, couplings, nozzles and fire hose appliances. (2013 ed., Section 6.3). Quincy, MA: National Fire Protection Agency.

6.2 REPAIR

Factory service is available with repair time seldom exceeding one day in our facility. Factory serviced appliances are repaired by experienced technicians to original specifications, fully tested and promptly returned. Repair charges for non-warranty items are minimal. Any returns should include a note as to the nature of the problem and whom to reach in case of questions.

Repair parts and service procedures are available for those wishing to perform their own repairs. Task Force Tips assumes no liability for damage to equipment or injury to personnel that is a result of user service. Contact the factory or visit the web site at www.tft.com for parts lists, exploded views, test procedures and troubleshooting guides.

All replacement parts must be obtained from the manufacturer to assure proper operation of the product, and to maintain approval of the device.

For additional information on care, maintenance and testing, refer to: NFPA 1962: Standard for the Care, Use, Inspection, Service Testing, and Replacement of Fire Hose, Couplings, Nozzles, and Fire Hose Appliances, 2013 Edition



Any alterations to the device and its markings could diminish safety and constitute a misuse of this product.

7.0 ANSWERS TO YOUR QUESTIONS

We appreciate the opportunity of serving you and making your job easier. If you have any problems or questions, our toll-free "Hydraulics Hotline", 800-348-2686, is normally available to you 24 hours a day, 7 days a week.

8.0 OPERATION and INSPECTION CHECKLIST

BEFORE EACH USE, appliances must be inspected to this checklist:

- Hose is securely attached
- Equipment has been inspected to the list below.

BEFORE BEING PLACED BACK IN SERVICE, appliances must be inspected to this list:

1. All valves open and close smoothly and fully.
2. The waterway is clear of obstructions.
3. There is no damage to any thread or other type connection.
4. The pressure setting of the relief valve, if any, is set correctly.
5. All locks and hold-down devices work properly.
6. Internal gaskets are in accordance with NFPA 1962 (2013) Section 7.2.
7. There is no damage to the appliance that could impair safe operation (e.g. dents, cracks, corrosion or other defects)
8. All swiveling connections rotate freely.
9. There are no missing parts or components.
10. The marking for maximum operating pressure is visible.
11. There are no missing, broken, or worn lugs on couplings.

NFPA 1962: Standard for the care, use, inspection, service testing, and replacement of fire hose, couplings, nozzles and fire hose appliances. (2013 ed., Section 6.3). Quincy, MA: National Fire Protection Agency.



WARNING Any appliance failing any part of the inspection checklist is unsafe and must have the problem corrected before use. Operating a appliance that fails any of the above inspections is a misuse of this equipment.