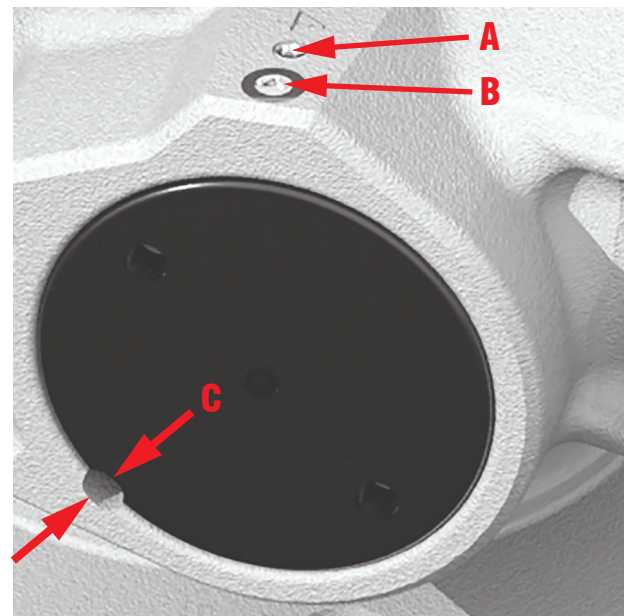
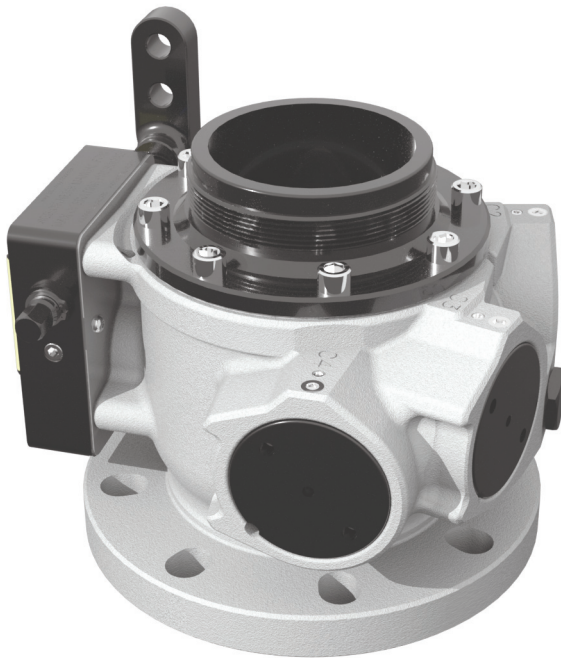


# Product Bulletin

## VUM Improvement

### Blind Cap, Gauge, and Vent (Auto Drain Valve)

Features	Benefits
Reduced material	Lighter blind cap, gauge, and vent (auto drain valve)
Ball removal ports	Easier auxiliary port option re-configuration



Step 1 Remove 1/4"-28 set screw (location A).

Step 2 Loosen 3/8"-16 dog point set screw (location B) until the auxiliary port is able to swivel.

Step 3 Align ball removal port in auxiliary port option with ball removal port in VUM (location C).

Step 4 Remove 46 ball bearings from each auxiliary port. Rotate auxiliary port back and forth while applying air to (location A).

Step 5 Once all ball bearings are removed from auxiliary port, remove auxiliary port option from VUM.