

Product Bulletin

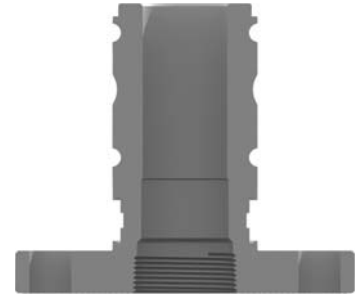
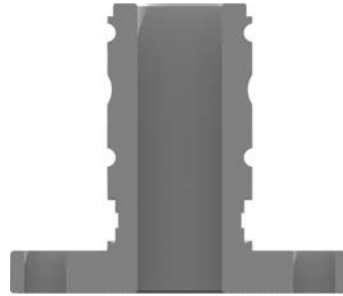
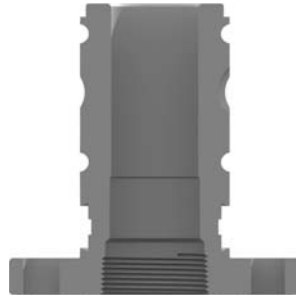
EF1 Flanges with 1.5" NPTF Threads

A design change has been made to Y1412 and Y1417 1.5" & 2" ANSI 150 flanges.

A 1.5" NPTF thread has been added to the Y1412 and Y1417 EF1 flanges. This change will provide users with additional flexibility. Users will now be able to attach the EF1 monitor directly to a 1.5" NPTF pipe fitting, while still utilizing the flange for structural stability.

Y1412

Y1417



Previous

New

Previous

New

Where Used

Where Used



Y1-E31A (1.5" ANSI 150 Flange)

Y1-E71A (2" ANSI 150 Flange)

Feature	Benefit
1.5" NPTF thread	Additional mounting option/method