

Twister Single Flow

95 gpm

TFT's 95 gpm (360 l/min) Twister nozzle is now available in a single 95 gpm (360 l/min) setting. A perfect match with any 95 gpm (360 l/min) foam eductor, for accurate foam application operations.

Twister Offers Outstanding Performance

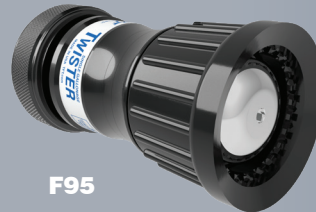
- Municipal and Industrial Foam Operations
- Industrial Hose Reel and Hose Cabinet Applications
- Industrial Fire Suppression Compliance Projects
- Wildfire and Brush Fire Operations



Outstanding Features

- All Tip Only Models Operate with a Twist Shut Off Operation
- All Ball Valve Models use TFT's Unique Stainless Steel Ball Shut Off

Stand Alone Nozzle with Integral Twist Shut Off



Nozzle With Ball Valve Shut Off



FS95P



The 95 gpm Twister (360 l/min) is available in three separate configurations: Nozzle (with Integral Twist Shut Off), Nozzle with Ball Valve Shut Off, and Nozzle with Pistol-Grip mounted below valve and Ball Valve Shut Off

- Ball Valve Models Include the Quick Change Rear Valve Seat System that Does Not Require Tools or Removal of the Ball
- Twisting the Shaper Position Produces the Following Settings: Off, Straight Stream, Narrow Fog, and Wide Fog

Standard Twister Series Features

- All Lightweight Materials
- Hardcoat Anodized Aluminum

FOAM

Stand Alone Nozzle with Integral Twist Shut Off

F95



Twister 1.5" (38mm) Nozzle

**Single
95 gpm
(360 l/min)
Setting**



- Single Flow Setting
95 gpm @ 100 psi (360
l/min @ 7 Bar)
- Hardcoat Anodized Materials
- Twist "Off" Position for Positive
Shut Off

HOW TO ORDER

PART #	DESCRIPTION
F95	TWISTER TIP 1.5" (38mm) FEMALE
FS95	TWISTER WITH BALL VALVE 1.5" (38mm) FEMALE
FS95P	TWISTER WITH GRIP 1.5" (38mm) FEMALE
FJ-MX-F	FOAMJET MULTI-EXPANSION FOAM ASPIRATION ATTACHMENT

SPECS

Model	F95	FS95	FS95P
Single Fixed Flow Rate	95 gpm (360 lpm)	95 gpm (360 lpm)	95 gpm (360 lpm)
Operating Pressure	100 psi (7 Bar)	100 psi (7 Bar)	100 psi (7 Bar)
Nozzle has twist shut-off position	Yes	Yes	Yes
Ball valve shut off	No	Yes	Yes
Nozzle breaks apart from ball valve	N/A	No	No
Pistol Grip	No	No	Yes
Bumper Material	Rubber	Rubber	Rubber
Inlet Coupling Size	1.5" (38mm)	1.5" (38mm)	1.5" (38mm)
Inlet Coupling Style	Knurled Rigid Base	Rocker Lug	Rocker Lug Swivel
Length	5.25" (13.3 cm)	7.37" (18.7 cm)	7.37" (18.7 cm)
Weight	11.2 lb (0.5 kg)	2.4 lb (1.1 kg)	2.6 lb (1.2 kg)



**FOAMJET
ASPIRATING
FOAM
ATTACHMENT**

TECHNICAL DATA

Task Force Tips model #F95 nozzle shall be provided. The single gallonage nozzle shall be furnished in a tip only configuration with flow rating of 95 GPM (360 l/min) at 100 PSI (7 Bar) and produce fog and straight stream patterns. The nozzle body shall be constructed from hardcoat anodized aluminum alloy and utilize stainless steel internal components. This tip only nozzle shall have a "twist off" position for break-and-extend operations and incorporate a rubber bumper for superior grip and protection. The nozzle shall be furnished with a 1-1/2" female NH rigid inlet and designed to accept the Task Force Tips FJ-MX-F FoamJet foam aspirating attachment. The unit shall have a unique serial number and be covered by a written five-year warranty. The Twister is available as tip only, with ball valve, and ball valve with pistol grip. All have a twist "off" position for positive shut off.